



ALBACH DiAMANT 2000

ALLROAD SELF-PROPELLED CHIPPER

Engine:
Up to 795 HP (585 kW)
Travel Speed:
50 mph (80 km/h)

Max. Feed Rate:
Up to 13,419 ft³/h (380 m³/h)
Feed Dimensions:
4' x 3'3" (1.23 x 0.98 m)

Max. Reach:
33'2" (10.1 m)
Load at Max Reach:
2,204 lbs (1000 kg)

MAXIMIZED EFFICIENCY WITH MAXIMUM RANGE

The Albach Diamant 2000 is a high-quality, self-feeding wood chipper as well as a durable, self-propelled vehicle that is both on- and off-road capable.

These requirements, which are set by the market together with self-feeding, are met by the Diamant 2000 every day in practical use.

With its truck-compliant 50 mph (80 km/h) approval the self-propelled all-road vehicle takes you uncomplicated to any place of operation.

Technical data Dimensions

Length	ft (m)	33'11" (10.34)
Width	ft (m)	8'4" (2.55)
Height (raised cabin)	ft (m)	12'11" (15'9" eye level) (3.95 (4.80 eye level))
Speed	mph (km/h)	50 (80)
Tires	Type	645/65R 42



Thanks to the **permanent all-wheel drive system** with independent hydromechanical drive on each axle, it's easy to climb hills in rough terrain.



Even the heaviest trailer loads do not bring the Diamant 2000 to its limits. Individual crab steering or all-wheel steering enable you to operate in even the most confined spaces.



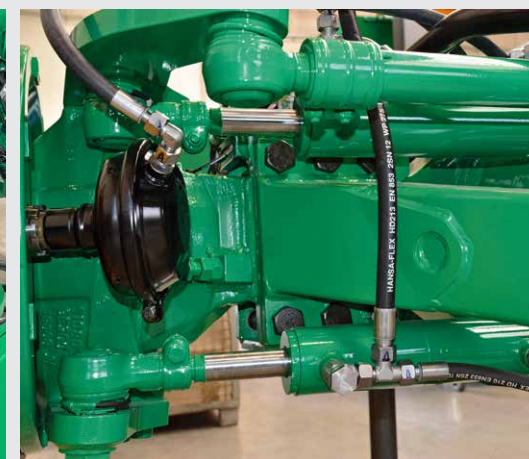
Highway approved



Axle suspension



Steering



THE PERFECT OPERATOR WORKSPACE

The 4.8m eye level guarantees safe all-round visibility, even with high wood piles.

The comfortable cab has sound insulation, air suspension, a heater/AC, and underfloor heating for fatigue-free work on long days.

For even more comfort, a refrigerator and microwave are available as options.



Driver display & controls



Comfortable seat



Air suspension

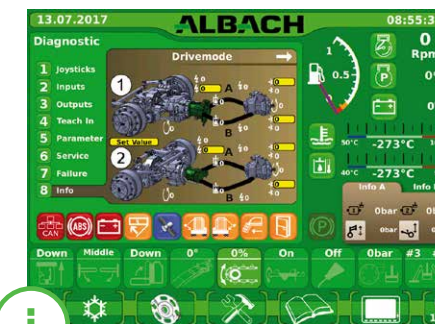


Underfloor heating

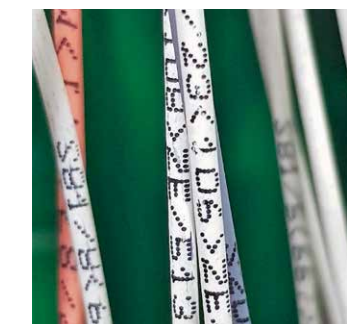
THE SYSTEM SOLUTION FROM ALBACH

With the **ALBACH Touch Screen Terminal** you can easily control all functions and adapt the machine to your individual needs.

Working parameters and joystick functions can be conveniently set from the driver's seat and saved in up to three different operator profiles.



Export work orders and import additional driver profiles via USB.

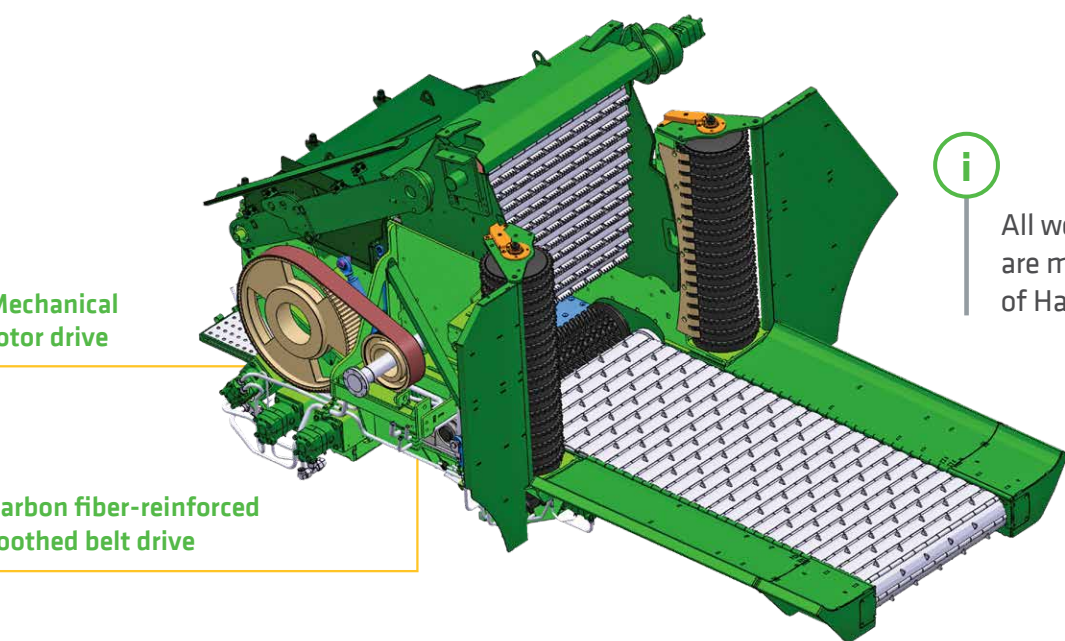


Diagnosis made easy: All information about controller and PIN assignment are printed on the cables.

QUALITY THAT PAYS OFF

The chipper has a vertical infeed belt and a direct drive for the infeed chain and infeed roller. Laterally-arranged infeed rollers guarantee a trouble-free infeed, e.g. when chipping complete trees and branches. The augers in the discharge floor are all driven by specially-mounted motors.

The Diamant has a unique guarding system to protect the rotor against foreign material. If the counter-blade is triggered by a sensor, the rotor clutch and infeed are switched off within a fraction of a second.



Mechanical rotor drive

Carbon fiber-reinforced toothed belt drive

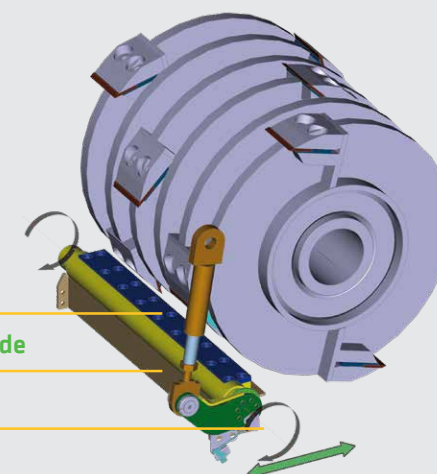


All wearing parts are made mainly of Hardox®.



To protect the rotor and rotor shaft from damage in a controlled manner, additional predetermined breaking points are installed.

- Interchangeable counter-blade
- Hydraulically-preloaded counter-blade
- Rotating counter-blade
- Adjustable



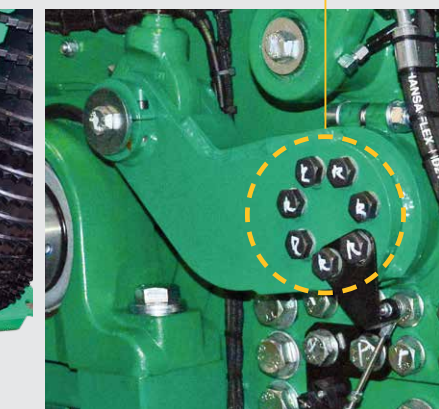
Technical data

CHIPPER		GEN 6	GEN 7
Feeding width (with feed rollers)	ft (mm)	4'0" (5'8") (1,230 (1,730))	4'0" (5'8") (1,230 (1,730))
Feeding height	ft (mm)	3'3" (980)	3'3" (980)
Rotor speed	rpm	up to 420	up to 420
Max. feed rate	ft ³ /h (m ³ /h)	up to 13,420 (380)	up to 17,657 (500)
Feeding speed		material-dependent 3-step variable control	
Rotor diameter	ft (mm)	3'7" (1,100)	3'7" (1,100)
Number of knives	pcs.	6 (optional 12)	6
Rotor drive		mechanical	mechanical
Accelerator drive		hydraulic, variable speed	
Counter-blade		2-sided insert / single elements	
Distance counter-blade - knives		Knives are adjustable after grinding	
Protection counter-blade		hydraulic overload protection	
Direction of rotation feed		reversible	

Trouble-free feeding



Shear bolts



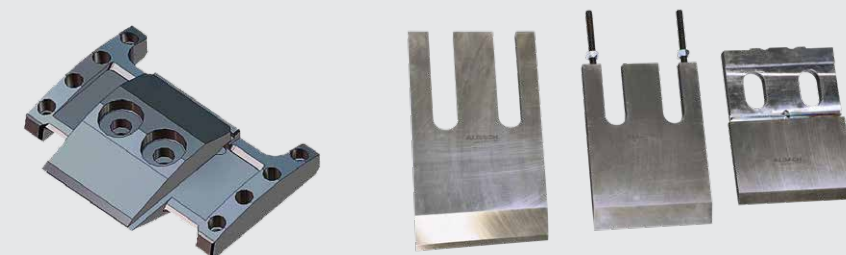
OPTIMUM WOOD CHIP QUALITY

Thanks to our rotor concept and flexible configuration options, we can respond to a wide range of customer requirements. With the ALBACH Diamant it is easy to produce wood chips in all specifications and for all purposes.



i

Interchangeable wear plates allow long rotor working time and an optimization cut of the wood chip quality.



ROTOR GENERATION 6

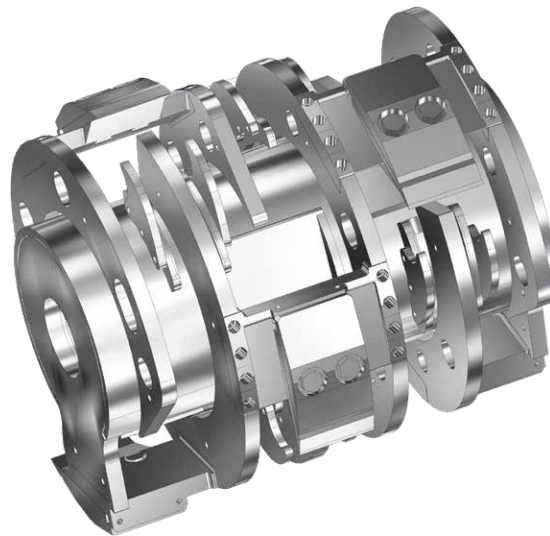
With the Rotor Gen. 6, you have the choice between either six knives or an optional 12. With six knives you can produce 0.35" (9 mm) to 1.38" (35 mm) chips. 12 knives produces chips from 0.35" (9 mm) to 1.1" (28 mm). The exact setting can be achieved in 0.08" (2 mm) steps.

Rotor Generation 6 comes with the Gen. 1 accelerator as standard. The Gen. 2 accelerator is available as an option.

All Diamant- and Silvator-type machines can be retrofitted with the Gen. 6 rotor.

Two different knife variants are available:

- Blades with adapter (quick-change system)
- Knife for universal use (quick-change system)



ROTOR GENERATION 7

With the Rotor Gen. 7 you can produce wood chips from 0.59" (15 mm) to 2.36" (60 mm). The exact setting can be achieved in 2 mm steps.

Interchangeable knife carriers allow optimal adjustment to a wide range of materials, producing the best possible chopped material to ensure efficiency.

Knife variants for Gen. 7:

- Blades with quick-change system for cutting lengths up to 1.5" (38 mm)
- Blades for cutting lengths up to 1.5" (38 mm)
- Blades for cutting lengths up to 2.36" (60 mm)



HIGHER THROUGHPUT & RANGE

The hydraulic infinitely variable **Generation 1 accelerator** has a high ejection capacity and throwing range. Loading is possible in many directions. All wearing parts can be replaced in a very short time.

The tower can be ordered with an optional remote control. This allows the driver to control the tower and fill trailers himself. The chipper driver can concentrate on his work without distraction. Loading heights of more than six meters are possible without any problems.

With the Generation 2 accelerator you get all advantages of the Generation 1 accelerator. In addition, folding out the accelerator makes daily maintenance and service work easier.

The Generation 2 accelerator enables high throughputs, even with the longest-cut lengths, due to its direct drive. You can independently adjust the speed. Speed fluctuations in the engine are compensated for by the hydraulically-variable drive.

Technical data

ACCELERATOR		GEN 1	GEN 2
Number of rotor blades	pcs.	6	6
Rotor speed	rpm	hydraulic, stepless, variable	
Rotor diameter	ft (mm)	3'11" (1,200)	4'1" (1,250)
Ejection tower rotation angle	°	270	270
Length of ejection tower	ft (m)	20'4" (6.2)	21'4" (6.5)
Drive		Toothed belt	Planetary gear



Exchangeable and reversible throwing blades made of Hardox® 400

Overload protection against foreign objects

Hardox® 400 (gray)

Maintenance-free slewing ring

Hydraulic, stepless accelerator drive

Carbon fiber-reinforced timing belt (Gen. 1 only)

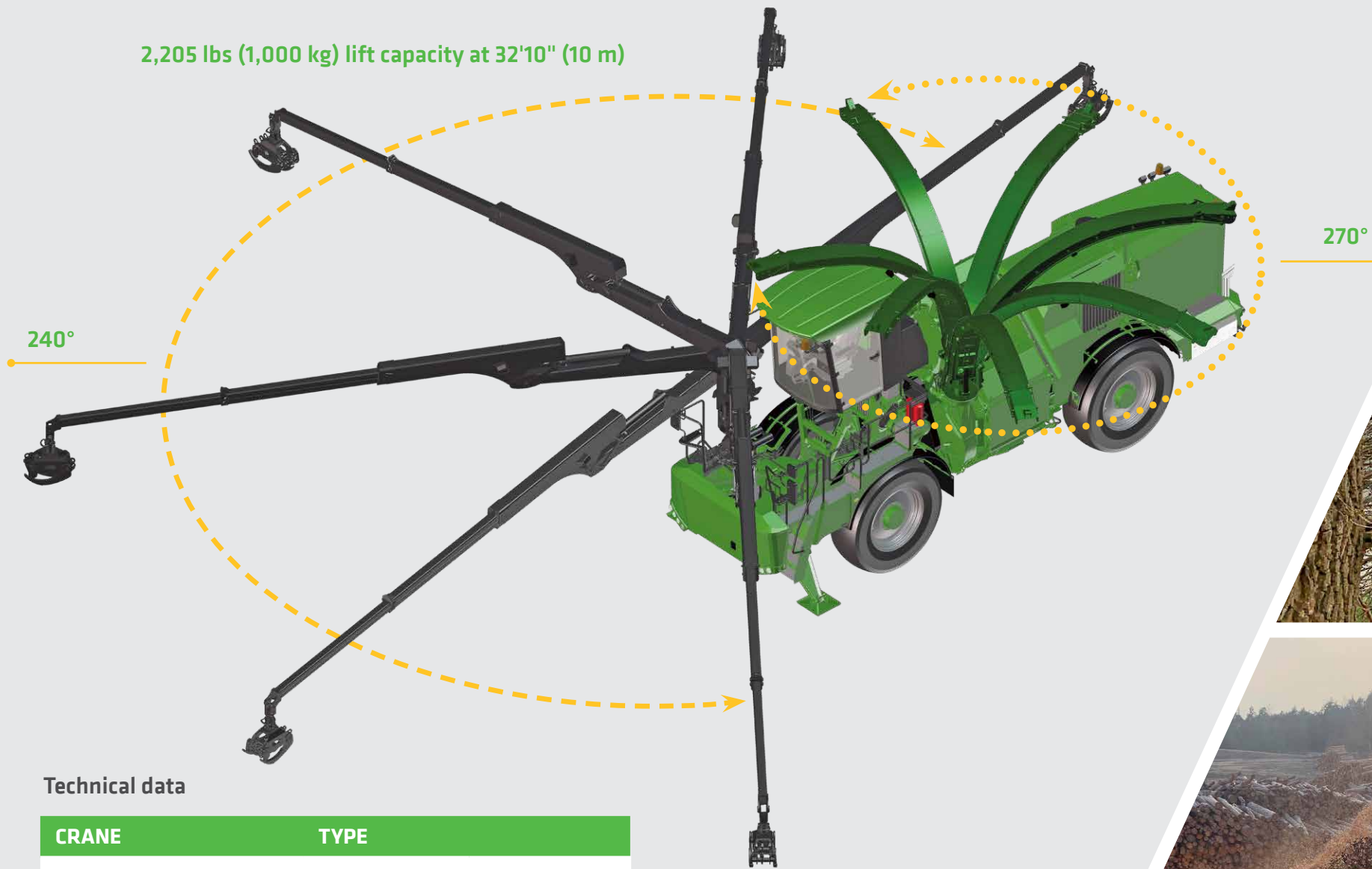


MORE EFFICIENCY, LESS IDLING

The 270-degree swiveling and height-adjustable tower ensures easy handling of the chipping material. The extended angle of rotation of the ejector tower allows transport vehicles to be positioned almost anywhere.

This variety of vehicle positioning allows the simultaneous use of several transport vehicles at the same time. Saving idle time during maneuvering further increases efficiency during chipping.

2,205 lbs (1,000 kg) lift capacity at 32'10" (10 m)



Technical data

CRANE	TYPE	
Type S110 F, Epsilon / Type 12LF10,30 Penz		
Max. Reach	ft (m)	33'2" (10.1)
Loads at 10,1 m	lbs (kg)	2,205 (1,000)
Crane throughput (1600 rpm)	gal/min (l/min)	52.8 (200)



3 ENGINE OPTIONS

Volvo or MAN engine with 4.25 gal (16.1 L) or 4.27 gal (16.2 L) displacement

High power and torque output, even at low engine speeds!

The transmission and hydraulics are optimally adapted to the torque characteristics of their respective engines to ensure powerful, dynamic, economical operation with low fuel consumption.

Allocation according to emission levels:

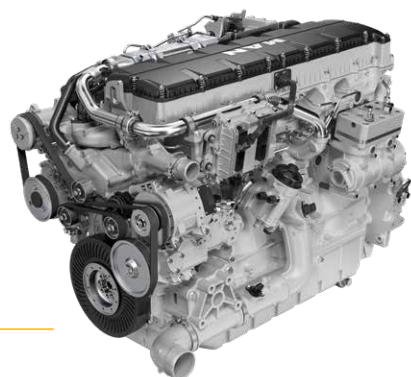
Currently, for new registrations

- USA: Tier 4 (according to EPA/CARB)
- Outside the USA: Requirements differ by country. Mostly based on Tier 4 or Tier V. In some cases, no specific requirements.

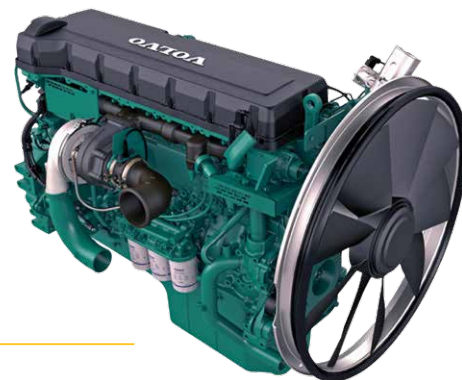
Technical data

ENGINE	TYPE	
Series engine MAN (exhaust level V)	D4276	790 HP (581 kW)
Volvo engine (exhaust level V)	TWD1683VE	795 HP (585 kW)
Standard Volvo engine (exhaust level Tier 4)	TAD1672VE	700 HP (515 kW)
Volvo engine (exhaust level Tier 4)	TAD1671VE	612 HP (450 kW)
Volvo engine	TAD1643VE-B	768 HP (565 kW)
Cylinder		6
Displacement	gal (L)	4.25/4.27 (16.1/16.2)
Engine speed at chopping	rpm	1600 - 1800
Tank capacity	gal (L)	249 (942)
Travel drive 2-speed transmission	hydromechanical	
All-wheel drive		✓
Travel speed	mph (km/h)	50 (80)
Turning radius	ft (m)	approx. 27'11" (8.5)

MAN 6-cylinder in-line engine 790 HP (581 kW) with 4.27 gal (16.2 L) displacement with common rail injection system, AdBlue, SCR catalytic converter, and exhaust gas recirculation.



Volvo 6-cylinder in-line engine (Tier 4) 700 HP (515 kW) with 4.25 gal (16.1 L) liter displacement, unit injector system, AdBlue, SCR catalytic converter, and exhaust gas recirculation.



SPLIT COOLING SYSTEM

With the Diamant 2000's split cooling system, you always keep a cool head.

Hydraulic oil cooler with reversing function

Water intercooler and air-conditioning cooler are installed in the rear of the chipper.

Automatic reversing function as standard.



TRACTION DRIVE

Best driving characteristics –
on- and off-road



Gearbox

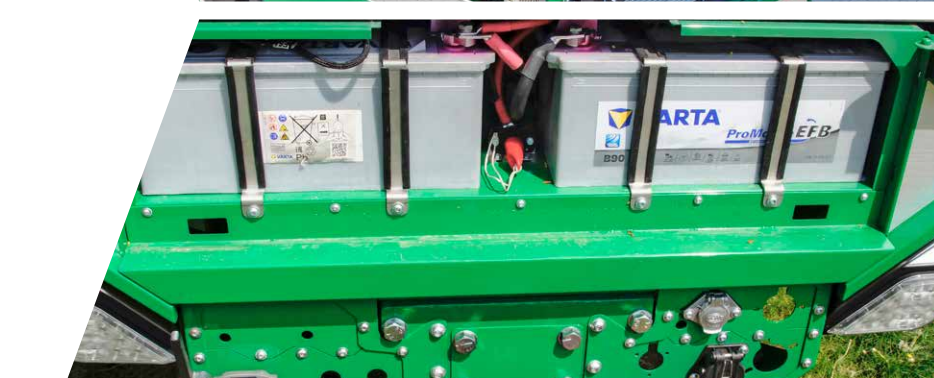
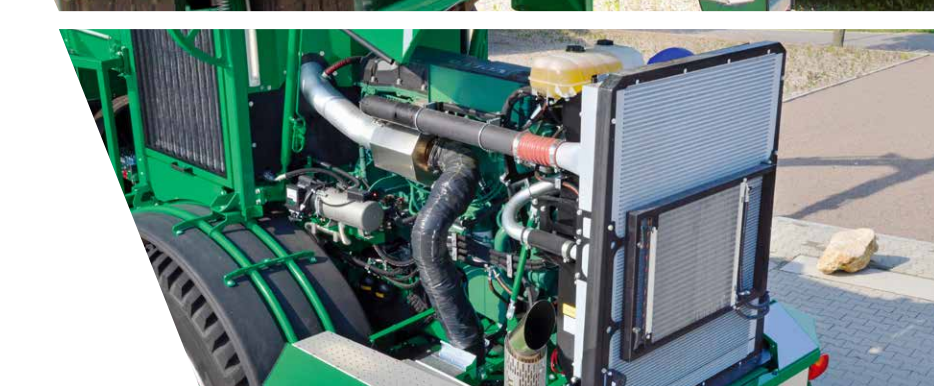


Steering



Axle suspension

MAINTENANCE & SERVICE



TRAINING & SERVICE PARTS

ALBACH training for drivers and service technicians

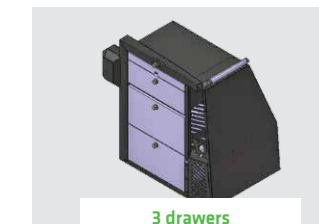
We offer qualified training on all ALBACH machines, both for the machines themselves as well as the individual components. Our goal is to provide you with the best know-how.



SPARE PARTS SUPPLY AND AVAILABILITY

Our motto is "Everything from one source." Motors, gearboxes, and crane parts all come directly from ALBACH.

We guarantee a complete spare parts inventory for service parts, wearing parts, and all drive parts, including motors.



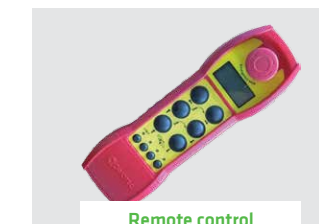
3 drawers



2 drawers and refrigerator compartment



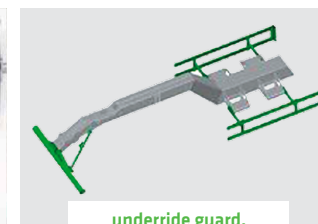
1 drawer, microwave / refrigerator compartment



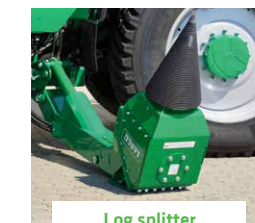
Remote control for tower



Winch



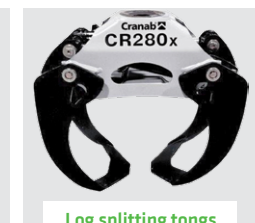
underdrive guard, country specific



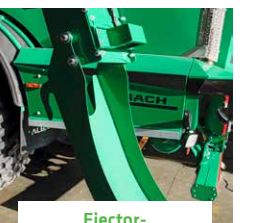
Log splitter



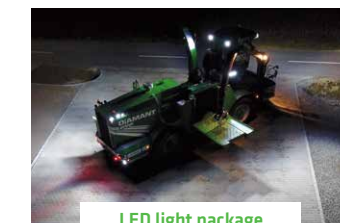
Splitting tongs



Log splitting tongs or finger gripper



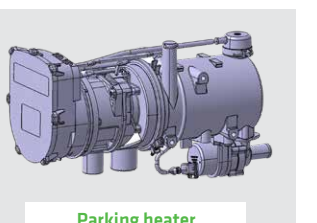
Ejector-reverse flap



LED light package



Camera systems



Parking heater



Sieve holder



Country-specific trailer hitches



Auxiliary batteries

WHY CHOOSE ALBACH?

Quality Made in Germany

As a premium manufacturer, **ALBACH** focuses on the highest standards in all areas.

- Robust, reliable machine design and construction
- High flexibility
- Trained, experienced specialists
- Loading and shipping

Contact Partners Worldwide

The company headquarters are located in Menning, Germany with production located in Langquaid, Germany. Our international customers have contacts in many countries around the world.

Individual Solutions

Mechanical engineering belongs to the classical engineering sciences. In this field, **ALBACH** has specialized in the production and further development of chippers.

Comprehensive Service

Our know-how – your benefit

- In a personal consultation, we address your individual project requirements
- We advise you on which machine is right for you
- You receive transparent information about the operating and service costs of the machine, even before you make your purchase
- With our worldwide sales and service partners, you will find a competent contact person close to you



ALBACH HISTORY



2006

Milestone

In order to achieve the hacker concept „self-driving and powerful“, the ALBACH Maschinenbau GmbH & Co. KG was founded in Menning. Construction of the first prototype and testing phase.



2013

Shrub press

In 2013 the first mobile shrub press was developed and completed.



2015 - 2018

New production facility

Due to the enormous increase in demand for the Diamant 2000, a new production site in Langquaid is established.



2021

Anniversary

The 500th machine Diamant 2000 is delivered.



2008

Presentation Silvator 2000

2008 the serial production started and the first Silvator 2000 was presented to the public. With a transport width of 3 m and a specially built crane, the machine was up to 50 km/h fast.



2014

DIAMANT 2000

The wood industry demands even more mobility. ALBACH presents the new Diamant 2000 with truck-typical dimensions, a new drive and rotor concept and a



2018

FÄLLBACH - the mobile felling crane

In 2018 the first newly designed felling cranes FÄLLBACH have been delivered to Northern Germany and to the USA.



2008 - 2014

Evolution

In the following years the Silvator was constantly developed and sold in more than 15 countries worldwide.



2015

Expansion

For the first time, the Diamant 2000 is also sold in North America.

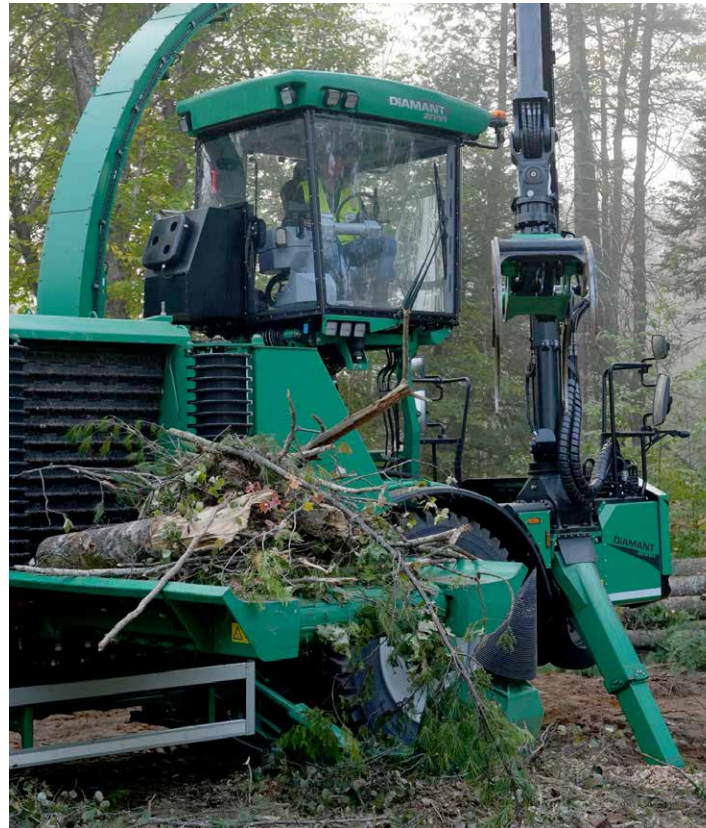


2019

Highway approval

Presentation of the Diamant 2000 50 mph (80 km/h) version.





SENNEBOGEN[®]

SENNEBOGEN LLC
1957 Sennebogen Trail
Stanley, NC 28164 USA

Phone +1 (704) 347-4910
Fax +1 (704) 347-8894
Email sales@sennebogenllc.com

DIAMANT2000-1124