



# 895E

GREEN HYBRID MATERIAL HANDLER



784 HP (585 kW) (Diesel)  
670 HP (500 kW) (Electric Drive)



925,940 lb (420,000 kg)  
(with K38 and grapple)

# PURPOSE-BUILT – TO SUIT **YOUR** PURPOSE

## We're building smarter, to build *your* business.

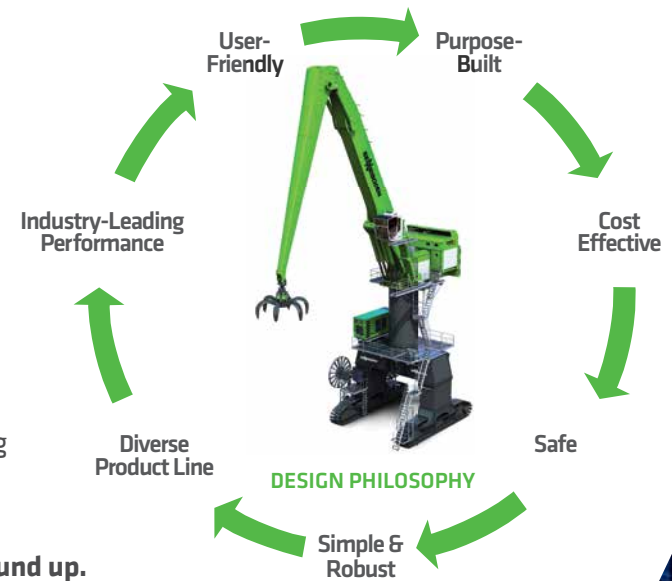
Every SENNEBOGEN material handler begins with you, our customer, and the challenges you face every day. Our singular focus leads us to the simplest, most efficient engineering solutions.

With our Green Hybrid series of purpose-built material handlers, we're meeting our commitment to help you safely move more material at a lower cost.

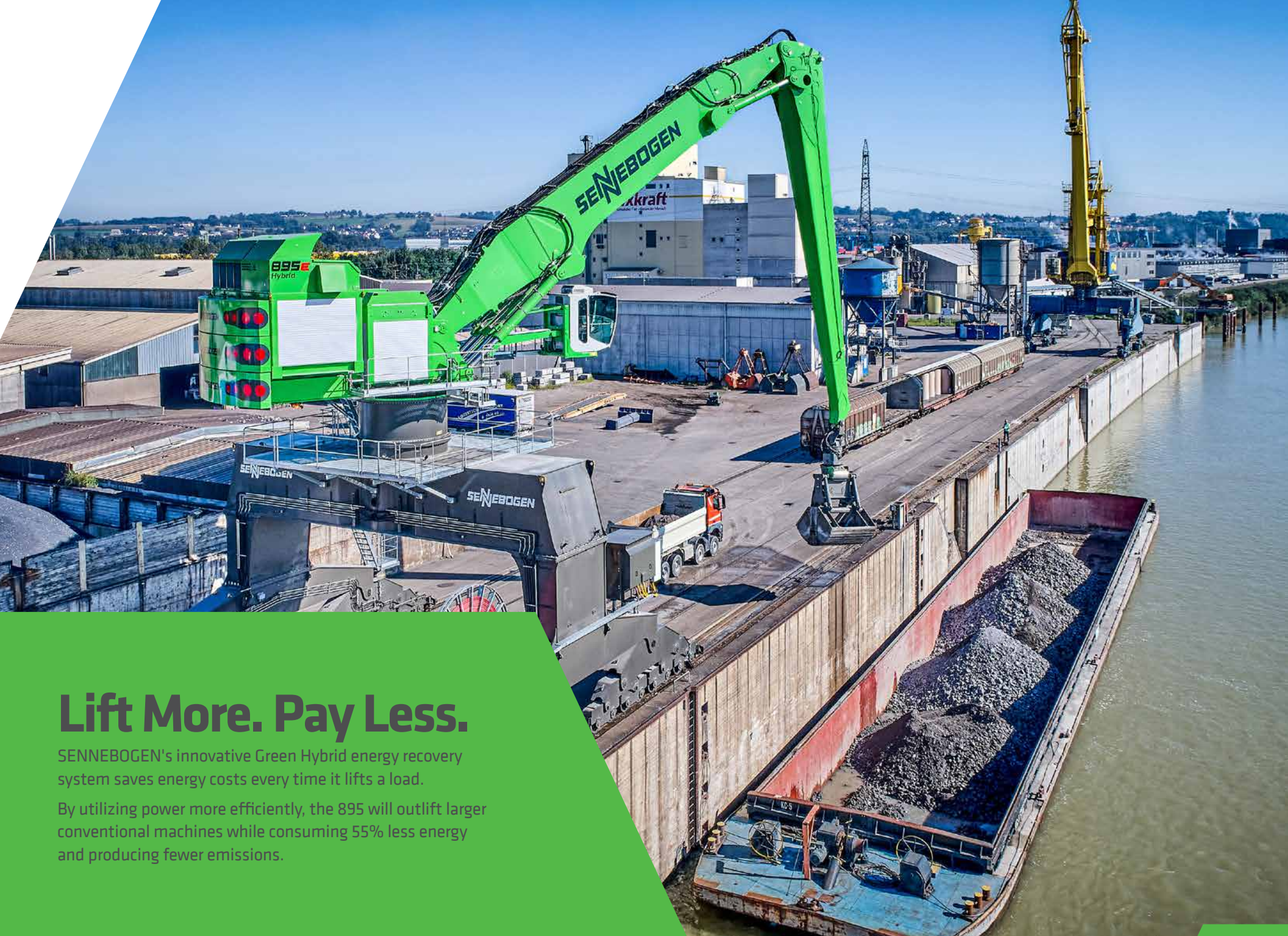
- Innovative energy recovery system saves costs with every lift
- Interchangeable components across multiple platforms
- Industry standard parts for service & repairs
- Intelligent hydraulics in place of complex electronics
- Robust structures matched to heavy loads and stresses

Now in our third generation as a family-owned business, SENNEBOGEN takes pride in understanding the needs of our customers. Thanks to our customers' feedback we've been able to continually develop and deliver the world's best material-handling solutions since 1952.

When you purchase a SENNEBOGEN machine, you'll know it was purpose-built for you **from the ground up**.







## Lift More. Pay Less.

SENNEBOGEN's innovative Green Hybrid energy recovery system saves energy costs every time it lifts a load.

By utilizing power more efficiently, the 895 will outlift larger conventional machines while consuming 55% less energy and producing fewer emissions.



# DESIGNED & MANUFACTURED — TO GIVE YOU — TOTAL CONFIDENCE



## Safety First

SENNEBOGEN's industry-leading, safety-first design features include the cab walk, guardrails, 360° visibility, and 3 points of contact at all times.

## PG8



## Service & Support

SENNEBOGEN has built the industry's largest network of factory-trained technicians to service your machines. We keep \$55 million in parts in our 100,000 sq.ft. warehouse.

## PG10



## Serviceability

All daily maintenance on the 895 can be completed safely with service components conveniently grouped and labeled for easy access.

## PG12







## Efficiency & Economy

Designed for high throughput and productivity, the 895 achieves the most rigorous environmental goals while reducing operational costs for energy, downtime and service parts.

### PG14



## Simplicity & Reliability

Generations of experience drive SENNEBOGEN's focus on simple structural and hydraulic design for built-in durability and uptime regardless of your 895's application.

### PG16



## Purpose-Built

SENNEBOGEN's modular design concept gives us flexibility to match your specific configuration needs without requiring costly modifications.

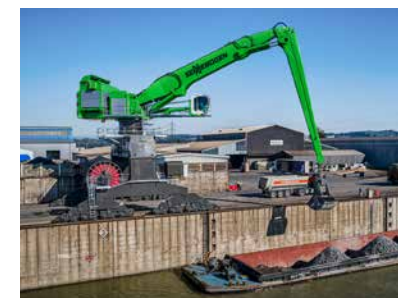
### PG18



## 895 Specifications

Get all the details, specifications, dimensions, lifting charts and available options for the 895 units.

### PG22





### Power

With its engineered efficiency and Green Hybrid energy recovery system, the 895 reduces your operating costs and environmental footprint whether you choose **diesel power or electric drive**.

For reliable performance and ease of maintenance, SENNEBOGEN diesel machines are powered by industry-preferred Cummins engines.

### Cab Configurations and Elevations

The elevating Maxcab, now with bulletproof windshield and skylight as standard equipment, allows an unobstructed view in all directions for increased safety and productivity, even under harsh and adverse conditions.

Optional features include:

- Windshield protective guard
- Skylight protection guard and/or FOPS guard



### Booms and Sticks

A wide choice of powerful boom and stick configurations allows the 895 to easily adapt to match the specific lift and reach requirements of your operations.



### Attachments

SENNEBOGEN grapples and clamshells complete your purpose-built solution with the same reliability as our 895 material-handling machines. Your machine will also accept a full range of standard attachments from all brand-name manufacturers including:

Orange Peel Grab



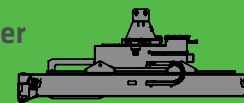
Clamshell Bucket



Loading Hook



Spreader



### Platforms

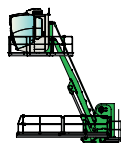
The modular design of the 895 adapts easily to any required mounting for gantries or rail cars.

#### Cab

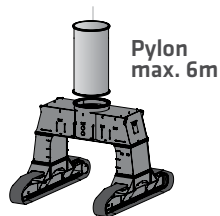


PORTCAB  
Portcab

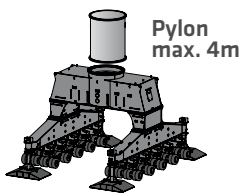
#### Cab elevation



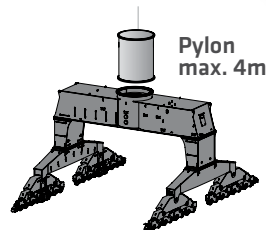
Skylift 1100



Crawler gantry  
PR400/840



Mobile gantry  
PM400/840



Rail gantry\*



## UNDERCARRIAGE

### ■ Stable footprint

The centered point of rotation for the swing bearing allows for 360° equal lift capacity

### ■ Swing system

The large-diameter slewing ring provides excellent cycle times and swing torque for large loads

### ■ Multiple platforms

The modular 895 is designed to adapt to standard wheeled, tracked, and pedestal mounts

## CAB

### ■ Elevating Portcab

Developed with port applications in mind to provide excellent visibility, maximum safety, loading accuracy, and stability

### ■ Joystick steering

Unobstructed view for operator with highly responsive controls

### ■ SENCON

Advanced diagnostic system with user-friendly multicolored interface available in multiple languages

### ■ Entry/exit

Maxcab sliding door with permanent catwalk for safe, easy entry and exit

### ■ Superior visibility

Large bulletproof glass front window and skylight as well as large side windows and glass floor, supplemented by 2-camera system, are standard

## HYDRAULIC SYSTEM

### ■ Purpose-built design

Fully hydraulic controls do not require special software to troubleshoot

### ■ Hybrid technology

SENNEBOGEN's exclusive Green Hybrid technology captures energy on each downstroke of the boom and releases it as "free" load-lifting power on each upstroke

### ■ HydroClean filtration

3-micron oil filtering with 99.95% efficiency absorbs water and prevents acid generation

### ■ Convenient servicing

All test ports are easily accessible in one place

## UPPER CHASSIS

### ■ Upper carriage

Guarding surrounds upper deck to enhance safety for service technicians

### ■ Reversible fan

Closed-circuit drive with axial displacement pump allows fast change between normal and reverse

### ■ Automatic lubrication

Extend component life with no waste, or spill hazards

### ■ OSHA-compliant

Continuous 3-point contact, access to upper deck with handrails, and guarding from ground to cab

### ■ Longitudinal engine mount

Allows safe, easy access and unequaled fuel efficiency due to efficient cooling

## BOOM & STICK

### ■ Limit switches

Limit switches on the boom and stick cylinders prevent high-pressure peaks to provide a cushion for rod movement and prevent attachments from colliding with the cab

### ■ Cylinder protection

The boom and stick have been designed specifically for material-handling applications. Hydraulic cylinders are mounted and protected by an open box frame to ensure optimal uptime

### ■ Boom pivot

Purpose-designed boom-mounting point on the chassis for enhanced balance and lifting capacity

## SAFETY

### ■ Safety rails

On North American models, full guarding on upper decks provides greater safety for technicians

### ■ Bulletproof glass

Bulletproof windshield and skylight are standard on all new SENNEBOGEN models

### ■ Fuses and relays

All fuses and relays are clearly labeled and easily accessible in a centrally-located terminal box



# HEALTH & SAFETY: THE FIRST STEP TO PRODUCTIVITY

**SENNEBOGEN is renowned as the industry leader in protecting people and preventing downtime.**

Safety-conscious owners look for equipment that prevents liability costs and protects their most valued assets. SENNEBOGEN works closely with the operators and technicians who know our equipment best, and we listen to their ideas to make our machines the safest on any jobsite.

Handrails around the upper deck and anti-slip walking surfaces provide a safe working environment for service and maintenance crews.



Safe access to the upper deck is achieved with a permanent 3-point contact ladder with railings.

Accessible safety switches including emergency shut-off, battery disconnect, and travel alarm.







**Intuitive joystick controls**  
seamlessly connect the operator  
to the industry's most responsive  
hydraulic system.

# PORTCAB

**Maximized window area**  
and elevating mount give  
the operator an unobstructed  
wide-angle view of the work zone.

**Ergonomic comfort and climate control**  
features can be adapted to individual  
preferences, fighting fatigue through long  
shifts and keeping operators alert.



# PROVEN UPTIME

To find out how to make SENNEBOGEN machines easier to maintain than any other material handler, we ask the experts...

... who actually service our equipment.

Our instructors, dealers, customers, and our own support team are all in constant contact to troubleshoot problems and find permanent solutions. Even our senior management and the Sennebogen family take a hands-on approach to product improvement by meeting customer mechanics and operators in their own shops and yards.

Their innovative ideas help us to deliver machines that spend more time on the job and less time in the shop.

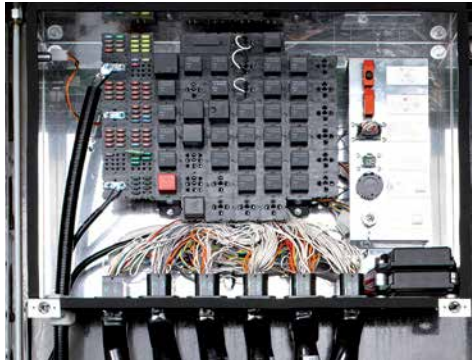


SENNEBOGEN Uptime Kits are matched to specific service tasks and machines. Hundreds of assorted parts, connectors, fittings, and electrical components are easy to locate and access.

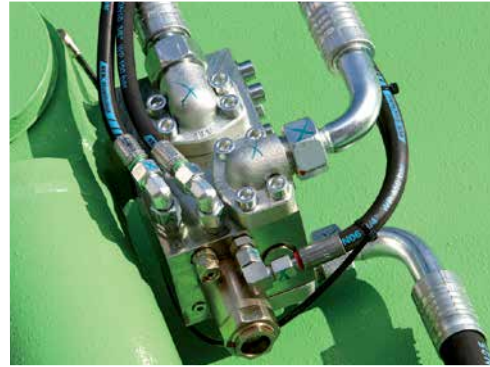
In the shop or in the field, these fully-stocked kits bring together all the parts and material required for a specific service need, conveniently sorted and organized in one place.



Solid steel top-opening compartment-access doors on the sides, top of the upper deck, and above the engine compartment maintain a secure fit, even after repeated openings for service access.



All the fuses and relays are in a centrally-located box for easy access.



Simple hydraulic controls replace complex electronics, so the 895 requires no special software or "black box" components to troubleshoot your machine.



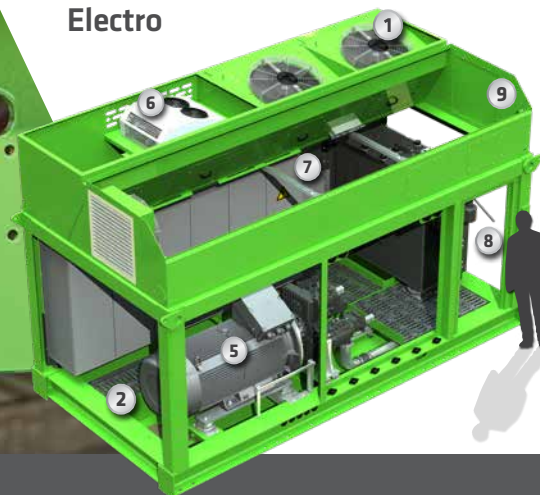
Automatic central lubrication, standard on all SENNEBOGEN machines, saves servicing time every day while improving component life cycles.

# SENNEBOGEN POWERPACKS

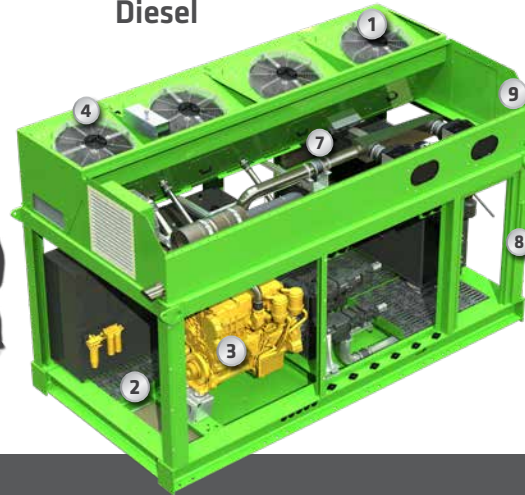
**Save time and money with easy maintenance and accessibility**

- Weather-independent servicing protected in the closed SENNEBOGEN Powerpack
- Clearly-arranged control cabinet and central hydraulic measuring points
- Maintenance cover can be opened upwards for quick and easy service

**Electro**



**Diesel**



**Ideal accessibility to all machine components:**

- 1 Oil cooler
- 2 Fresh air intake
- 3 Diesel engine
- 4 Diesel engine cooler
- 5 Electric engine
- 6 Air conditioning
- 7 Control cabinet
- 8 Central lubrication system
- 9 Powerpack maintenance cover, controlled hydraulically



# BIG SAVINGS

“Green Efficiency” powers a new generation of machines that reduce operating costs through every working hour and on every lift.

All SENNEBOGEN E-Series machines are built on layers of smart engineering and system innovations aimed at doing more with less. Our “Green Efficiency” solution combines multiple design features that utilize power more effectively to achieve **savings of up to 55%** compared to traditional diesel-fueled machines.



## ONE MACHINE - THREE MODES OF USE



### FAST LOADING CYCLES

The 895 E-Series combines speed and efficiency

When handling bulk materials, high loading and unloading speeds are necessary to save money. Therefore, the port specialist works in a material-handling mode optimised for speedy working cycles as standard.



### PRECISE CARGO HANDLING

General cargo is all about accuracy in every aspect

The 895 E-Series moves pulp bundles, big bags, or other general cargo with maximum precision - at the touch of a joystick button and without interrupting work.



### HEAVY LIFT FOR MAX POWER

Bringing out the best in the 895 when handling heavy loads such as containers or coils

Working in heavy lift mode increases the load capacity of the machine significantly and, at the same time, the machine's equipment maneuvers to its destination with even greater sensitivity.



# LITTLE FOOTPRINT

Whether you choose a Tier 4F engine or electric motor to power your 895, our efficient hydraulics and Green Hybrid technology provide for eco-friendly material handling.

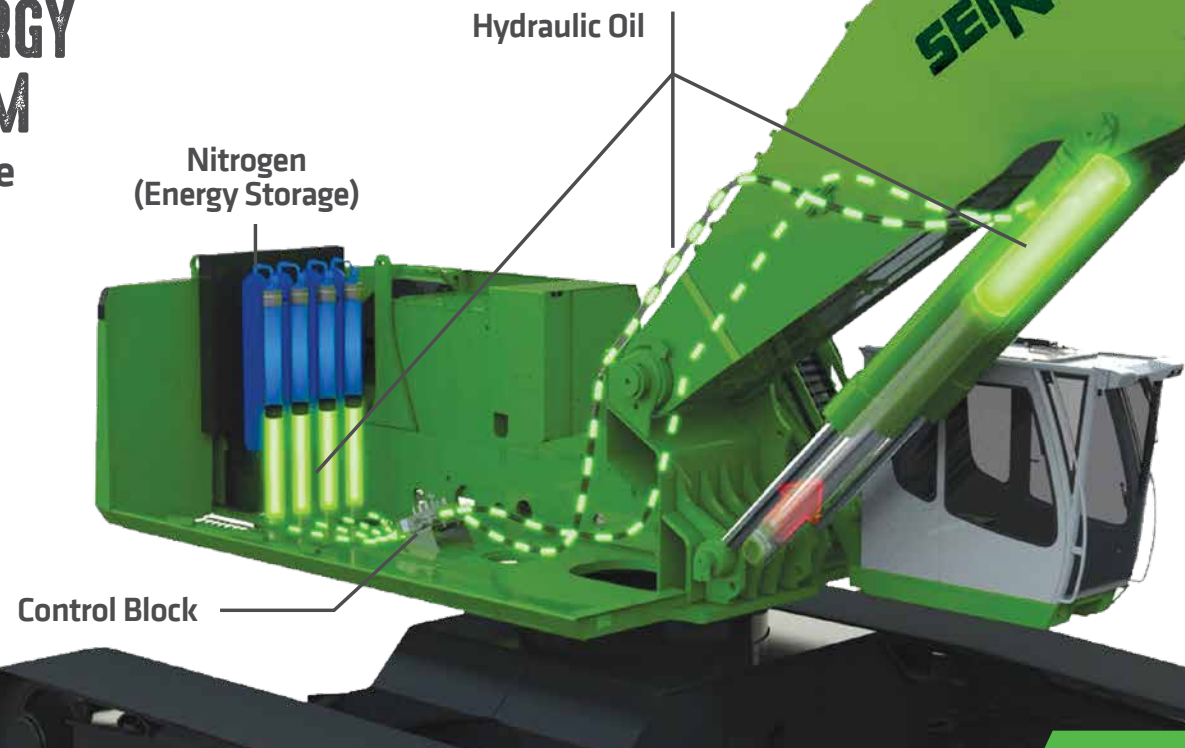
**REDUCE ENERGY  
COSTS BY 55%**  
WITH GREEN HYBRID TECHNOLOGY

By utilizing power more efficiently, the 895 will outlift conventional machines while it consumes **55% less energy** and reduces emissions.

- Vertical boom movements generate potential energy.
- Our hybrid cylinder captures energy in gas accumulators.
- Released energy supports the boom through the next lift cycle.
- Simple, safe energy recovery with no electronics.

## GREEN HYBRID ENERGY RECOVERY SYSTEM

Scan to watch an online  
video demonstration





# ATTENTION TO DETAILS MAKES US STRONGER

**Strong and smart, SENNEBOGEN machines stand up to your toughest work environments.**

Reliability and durability are engineered into the details of your 895, from heavy-duty structural components to natural flow-through engine cooling. Each of SENNEBOGEN's manufacturing, fabrication, and assembly facilities is ISO-certified to deliver the same outstanding quality in every machine, every time.

By going to work every day, and staying on the job year after year, your 895 is built to deliver the best return on your equipment investment.

Isolated airflow, improved dust discharge



Low-vibration engine mounting reduces wear on components and lowers sound levels.

Fully-hydraulic controls require no special software to troubleshoot and all test ports are easily accessible in one place.



Fabricating booms and sticks in our own shops lets SENNEBOGEN eliminate welding stresses inside the box structure, maximize service life.







Built on SENNEBOGEN's renowned expertise with intelligent hydraulics, the 895 and its Green Hybrid system minimizes the need for delicate electronics and computers, preventing their related failures and the associated downtime in harsh environments.





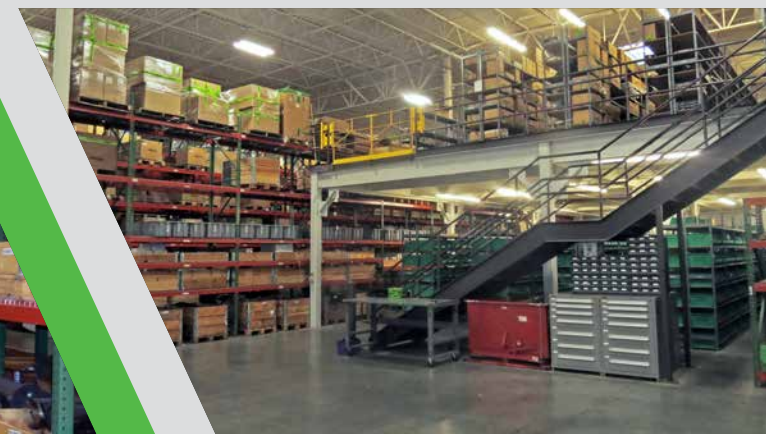
# BEYOND THE MACHINE

SENNEBOGEN is on a mission to deliver the lowest Total Cost of Ownership with industry leading after-sales support. Factory technical support, 55 million parts in inventory, and 24/7 parts availability translates into less downtime and more production.

- Our 100,000 sq. ft. (9,300 m<sup>2</sup>) headquarters in Stanley, NC is a multipurpose facility dedicated to supporting customers “beyond the machine.”
- Our coast-to-coast network of factory-trained distributors, authorized service providers, and technicians sets the industry standard for outstanding field service.
- SENNEBOGEN application specialists provide customers and dealer sales staff with expert insight into unique challenges.
- SENNEBOGEN's in-house engineering solutions provide customers with custom machine solutions to meet their specific applications.

The largest inventory of material handler parts in the Americas ensures fast delivery for repairs and service to every fielded SENNEBOGEN machine currently in operation.

**98% ORDER FULFILLMENT  
WITHIN 24 HOURS**



# TRAINING CENTER OF EXCELLENCE

Our dedicated Training Center in Stanley, North Carolina provides both primary and advance courses free of charge for our customers. This free training is of the same level that Dealers and Authorized Service Providers (ASPs) receive.

## Purpose-built For America's Best-Trained Technicians

The main demonstration bay allows hands-on access to machines, while the meeting rooms and classrooms are all equipped with the technology required for today's interactive instruction methods.

Truly a Center for developing excellence in service and support for dealers, ASPs, and customer personnel. The SENNEBOGEN Training Center has earned accolades for the quality of its instructors, facilities, and materials.

## Free Training Courses Include:

Service • Parts Training • Tree Care • Operator Familiarization

Visit us online at  
[www.sennebogen-na.com/training](http://www.sennebogen-na.com/training)



### Service Level 1

**Class Size:** 8 Students

**Required:** Basic Technical Knowledge

**Course Content:**

- Machine Safety, Operation & Functions
- Preventive Maintenance
- Read & Understand Hydraulic & Electric Schematics
- Basic Troubleshooting:  
Magnet System, Hydraulics, Electrics

### Service Level 2

**Class Size:** 8 Students

**Required:** Completion of Level 1 Class

**Course Content:**

- Remote Troubleshooting
- Component Training & Repair
- Failure Analysis
- In-Depth Troubleshooting:  
Magnet System, Hydraulics, Electrics

———— **Course fees:** No charge to SENNEBOGEN dealers, staff, and customers. ————

Courses offered in English and Spanish sessions

5 Day Courses



# PURPOSE-BUILT FACILITIES

With nearly 1,000,000 sq. ft. (93,000 m<sup>2</sup>) of production space in our four manufacturing facilities in Europe, every step of production at SENNEBOGEN is planned to serve individual customer needs. Every critical component and process is completed in-house to assure quality, efficiency, and flexibility on the production line.

- We fabricate our own booms and sticks
- We have a full line of interchangeable platforms
- Our plants are designed to customize each machine, built-to-order
- Your machine is fully inspected and live-tested before it leaves the factory

Our four factories in Europe support the full range of in-house capabilities for SENNEBOGEN to machine, fabricate, and assemble all major components to our own standards.

*(Pictured here is our main plant in Straubing, Germany)*



Modular components used across multiple products allow SENNEBOGEN to deliver purpose-built machines competitively. Shared systems also streamline after-sale parts inventories for customers and their local SENNEBOGEN distributors.







Every configuration of a SENNEBOGEN begins as an identical machine up until the final stage of assembly. The unit is then mounted on your choice of undercarriage or platform then completed with your preferred equipment and choice of cab.



# THE RIGHT TOOLS FOR EVERY JOB ENSURES MAXIMUM PRODUCTIVITY

Keep your 895 E “purpose-built” from end-to-end with your choice of genuine SENNEBOGEN attachments.

SENNEBOGEN grapples, lifting magnets, and clamshell buckets are all heavy-duty, production-rated tools, built to SENNEBOGEN's exacting standards for reliable, efficient service. Specified to match the fittings and power ratings for your SENNEBOGEN material handler, these attachments ensure that you always get the most productivity from your machine.

Available from our network of SENNEBOGEN Dealers and Authorized Service Providers, *green machine* attachments qualify as part of your total SENNEBOGEN Capital financing package.



## Orange Peel Grapples

Built to grab and hold large loads efficiently, with easy handling and reliable service

- 4-tine and 5-tine scrap grapples
- From 0.5 to 5.0 yd<sup>3</sup>
- Protected hose routings and hose guarding
- Tine tips 44% stronger than Hardox 400
- Fully sealed Rotobec rotator design with 360° rotation
- Self-contained cylinders with integrated guarding

## Lifting Magnets

Made-in-America magnets engineered to operate 24/7 with consistent lifting strength throughout every working shift

- Deep field and extra-deep field models with aluminum or copper coils
- Optimized for true 75% duty cycle
- Available in common sizes from 30" (762 mm) to 72" (1828 mm)
- Balanced for superior lift-to-weight ratios
- Heavy-duty cast or fabricated casings
- High-temperature insulation
- Durable manganese bottom plate





## Mag Grapples

Combination 4-tine grapple and magnet to sort and separate scrap metals from mixed loads and debris

- 11 models from 0.75 to 1.5 yd<sup>3</sup>
- Magnets from 30" to 44" diameter
- 360° rotation designed for high radial and axial loads
- Removable cylinder guards for ease of service



## Clamshell Buckets

- Light, standard, and heavy-duty models
- Sizes from 1.5 yd<sup>3</sup> to 14 yd<sup>3</sup> capacity
- Rotobec 5,000 psi quad-cylinder design
- Fully-sealed 360° rotation
- Bolt-on cutting edges





# SPECIFICATIONS INDEX

## 895 E

Technical Specifications .....	24
Standard / Optional Equipment .....	25
Dimensions .....	26-27
Lifting Capacities - K28 Port Heavy Lift.....	28
Lifting Capacities - K32 Port.....	29
Lifting Capacities - K38 Port.....	30









# Technical Specifications - 895 E

ENGINE (DIESEL)	
model	CAT C18
emission	EPA Tier 4F
net power	800 HP (597 kW) @ 1,800 rpm
injection	high-pressure common-rail
aspiration	turbocharged, charge air cooled
fuel tank	594 gal (2250 L)
air filtration	dry filter with integrated pre-separator, automatic dust discharge, main element and safety element, contamination indicator
control	integrated ECM automatic idle - stop eco mode
ENGINE (ELECTRIC - OPTIONAL)	
net power	670 HP (500 kW) @ 1,800 rpm
HYDRAULIC SYSTEM	
system type	LUDV load-sensing pilot pressure controlled open center
pump type	variable displacement axial piston pump
max. pressure	5,076 psi (350 bar)
hydraulic tank	573 gal (2170 L)
filtration	dual filtration system 3 micron (HydroClean)
COOLING	
Cooling system	compact 3-circuit cooling system with large cooling capacity. Thermostatically-regulated fan drive for oil and water cooler reduces energy consumption and noise emissions, fan reversal
UPPER CARRIAGE	
design	torsion-resistant box design, precision-crafted steel bushings for boom mountings. Clear, service-friendly design, sea climate-resistant coating, camera package (right/rear), telematic system SENtrack DS
central lubrication	automatic central lubrication system for equipment and slewing ring
hybrid system	2 hybrid stores installed on both sides on the upper carriage, 2 energy recovery cylinders in the hoisting system
TRAVEL / UNDERCARRIAGE	
design	undercarriage in stable, torsion-resistant box design in different versions
mobile undercarriage	stable mobile gantry undercarriage PM 400/840 with 20 wheel sets and integrated 4-point support, automatic load compensation via corresponding level control for even floor relief, all-wheel steering on all wheel sets and crab steering
crawler undercarriage	crawler undercarriage with hydraulic travel drive on each chassis side integrated in the chassis frame by an axial piston motor via compact planetary gears, spring-loaded parking brake, hydraulically-ventilated multi-disk brake, crawler gantry undercarriage PR400/840, flat track shoes 3' 11" (1,200 mm)
travel speed	0-0.9 mph (0-1.5 km/h) (crawler gantry) 0-2.5 mph (0-4 km/h) (mobile gantry)

ELECTRICAL	
alternator	24 V, 105 A
starter	24 V, 9 kW
batteries	2 x 210 Ah, battery disconnect switch
SWING SYSTEM	
swing speed	0 - 3.6 rpm, stepless
swing hydraulic	closed loop
drive	compact planetary gear with bent-axis hydraulic engine, integrated brake valves
swing brake	multidisc brake, spring-loaded
swing bearing	external teeth sealed triple roller bearing
ELECTRICAL	
alternator	24 V, 105 A
starter	24 V, 9 kW
batteries	2 x 210 Ah, battery disconnect switch
REFILL CAPACITIES	
fuel tank	594 gal (2250 L)
engine cooling system	30 gal (115 L)
engine oil w / filter	12 gal (45 L)
hydraulic tank	573 gal (2170 L)
hydraulic system	488 gal (1850 L)
DEF (AdBlue) tank	27.7 gal (105 L)
slewing gear	3.33 gal (12.6 L) each
pump distributor gearbox	2.25 gal (8.5 L)
slewing ring lubrication reservoir	0.26 gal (1.0 L)
central lubrication reservoir	14.08 lb (4 kg)
WEIGHT	
operating weight	approx. 925,941 lb (420,000 kg)

Subject to technical modification.

# Standard / Optional Equipment - 895 E

ENGINE	
Water separator in fuel line	●
Automatic idle / engine stop control	●
Eco mode	●
Visual fuel tank check	●
Engine block	○
Electric fuel pump	○
ELECTRIC	
Battery disconnect switch	●
Centralized fuse box	●
HYDRAULIC	
Pilot pressure controlled variable displacement pump	●
Thermostatically-controlled cooling system	●
Centralized hydraulic test ports	●
Protection covers for pilot pressure control valves	●
3-micron dual filtration system	●
Load-sensing, flow-on-demand hydraulic system	●
Optimized hydraulic pump regulation (GLR)	●
Attachments open, close, & rotation hydraulics	●
Hydraulic tank shutoff valve	●
Electrical hydraulic tank pre-heater	○
Biodegradable hydraulic oil	○
Tool control for programming pressure/rate of up to 10 tools	○
Load moment warning with capacity display	○
Overload safeguard with shutdown	○
UPPER CARRIAGE	
Automatic lubrication system	●
Anti-slip mats on walking area	●
Handrails on top of upper carriage	●
LED lighting packages	○
Electric hydraulic tank preheating for temperatures below -20°C	○
Custom colors	○
Seawater paint coating	○
SWING SYSTEM	
360° protection cover, removable	●
Electrical driven swing gear pinion lubrication pump	●

OPERATOR'S CAB (Portcab)	
Portcab, Skylift 1100, hydraulic elevation stepless	●
Air suspended operator's seat with lumbar support and headrest	●
Adjustable arm and foot rests	●
Seat heater	●
Ergonomic proportional Joystick adjustable with the armatures	●
Safety lever to avoid unintentional joystick activation	●
Electric air conditioning	●
Heating system with optimised de-icing and de-mist function	●
Large 10.2" Monitor	●
Surveillance cameras over rear and right side of the machine	●
Additional trainer's seat with seat belt	●
SENCON diagnostic system	●
Large-scale floor window with safety glass	●
Parallelogram windscreen wiper	●
12V, 24V, 240V, and USB power outlets (electric version)	●
Bottle/cup holder	●
Tinted double glazing for side windows	●
Wipers for roof window	●
Sun shades	●
Bulletproof skylight	●
Air-conditioned operator's seat	○
Sun protection package	○
Preheating system	○
Adjustable stick-mounted zoom camera to monitor the loading area	○
17" camera monitor	○
Cooling box for drinks and food	○
Bulletproof windshield	○
Speaker system	○
Radio with USB and SD ports, plus MP3 and Bluetooth	○
Safety side window and rear window	○
Wipers for lower front window/skylight	○
Polycarbonate safety glass	○
Sun blinds on the side windows	○
Speaker system with gooseneck microphone	○
Additional cameras	○

UNDERCARRIAGE	
Torsion-resistant box design in different versions	●
Stable mobile gantry PM 400/840 with 20 wheel sets	○
Crawler gantry PR400/840, flat track shoes 3' 11" (1,200 mm)	○

WORKING EQUIPMENT	
Purpose-built material-handling boom	●
Green Hybrid energy recovery system	●
Purpose-built material-handling stick	●
Attachment hydraulic line connections with ball valves	●
Safety check valves for stick cylinders	●
Safety check valves for boom cylinders	●
Cylinder end-position damping	●
Boom hoist limitation	●
Bronze bushings connected to automatic lubrication system	●
Stick limitation	●
Equipment floating position	○
Lift limitation/shaft limitation adjustable to the stop settings	○
LED light package	○
Stick-mounted camera	○

ATTACHMENTS	
Orange peel grapple	○
Clamshell	○
Magnet	○
Log grapple	○
Power attachment	○
Pipe handler	○

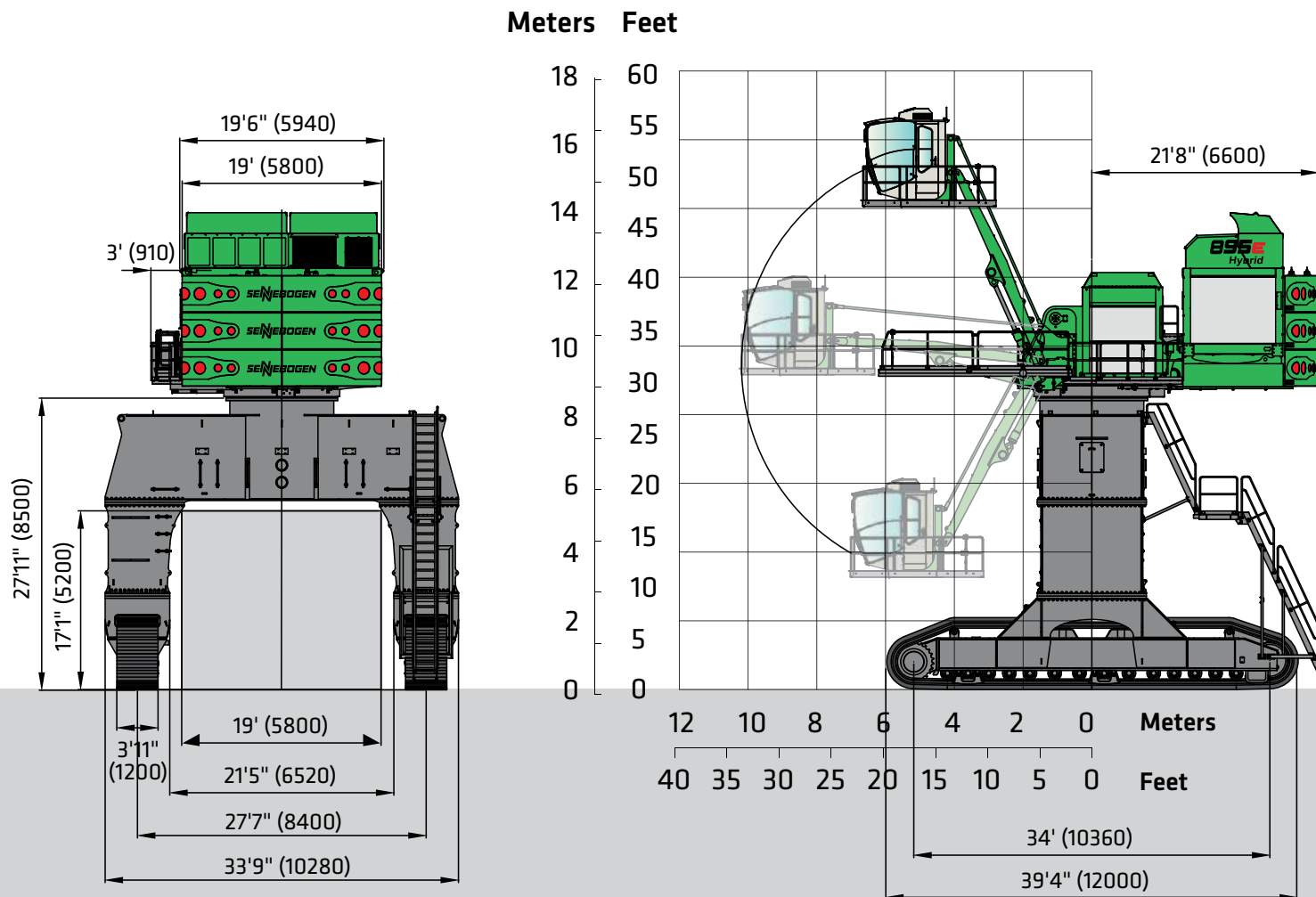
Standard Equipment ● Optional Equipment ○

Subject to technical modification.



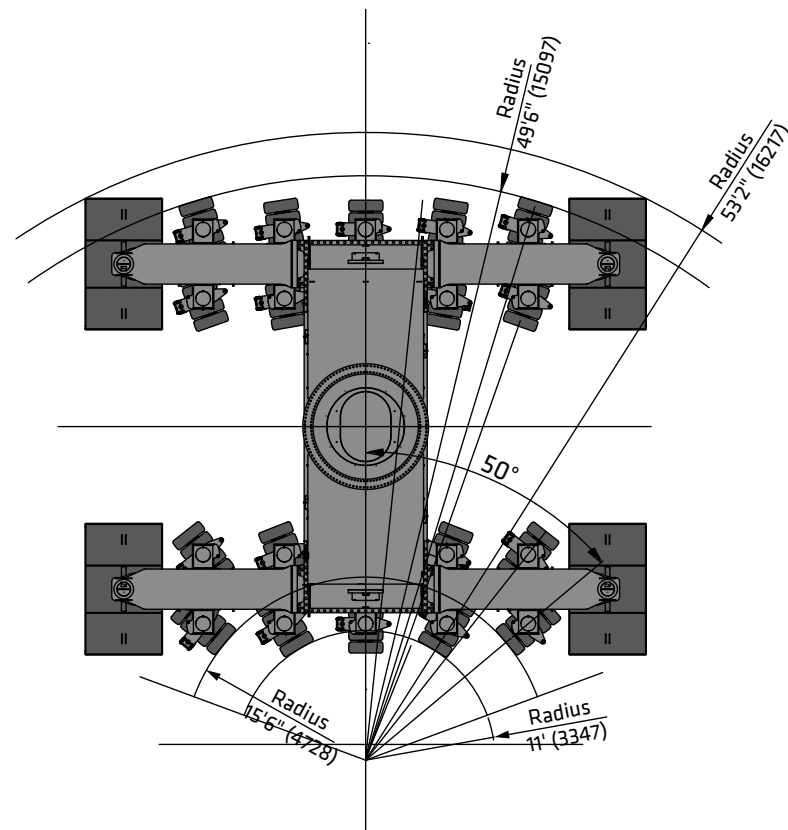
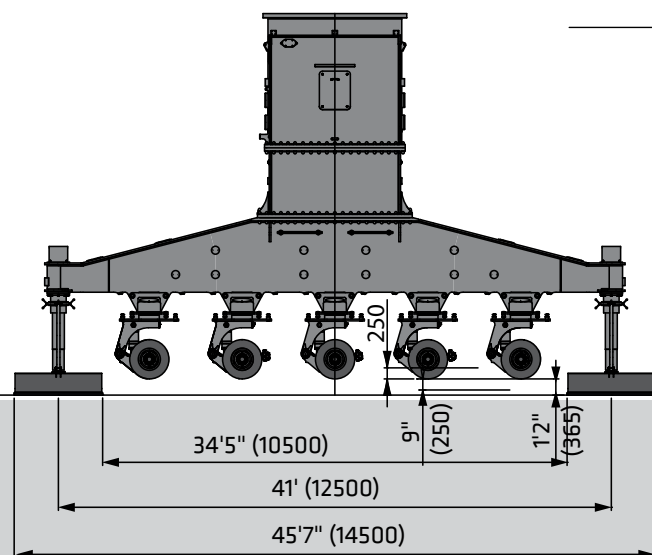
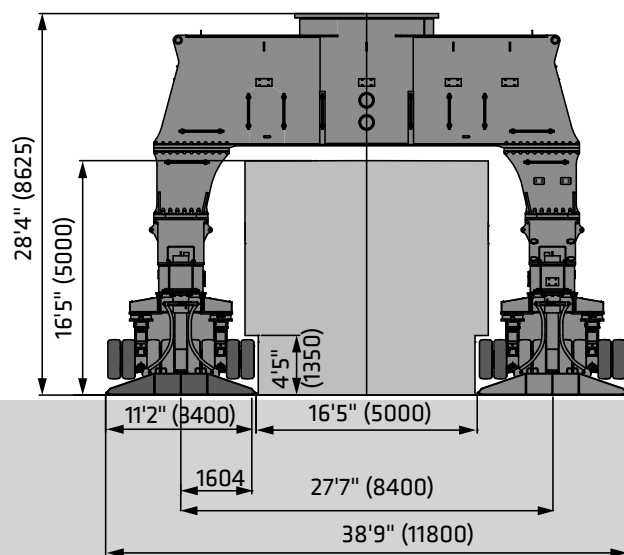
## Dimensions - 895 E

Crawler gantry PR400/840



# Dimensions - 895 E

Mobile gantry PM400/840





### Lift Capacities - 895 E

#### Working Equipment K28 Port Heavy Lift

Reach	91'10" (28 m)
Boom	52'6" (16 m)
Stick	44'3" (13.5 m)

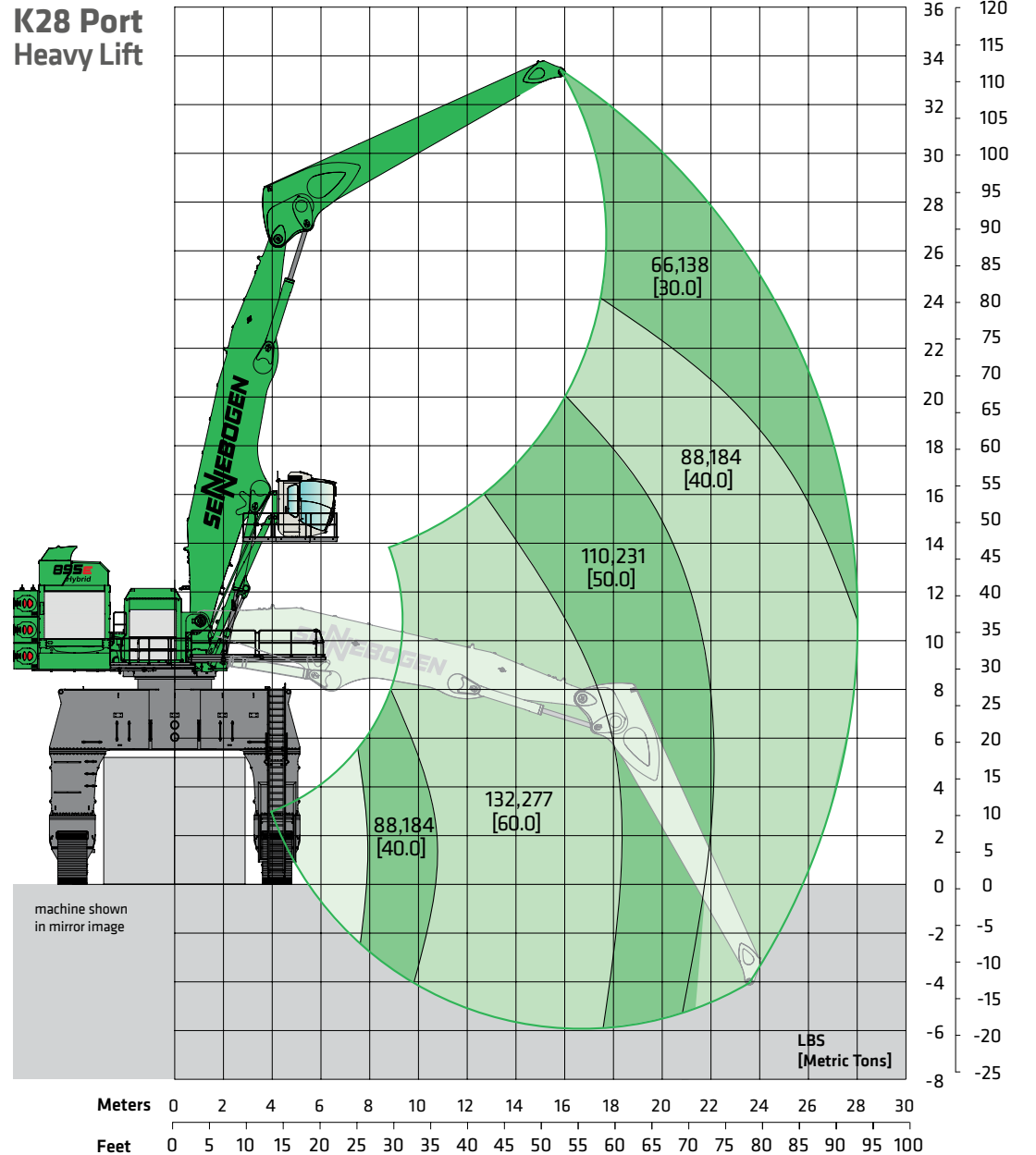
#### Operator's Cab

Model	Portcab, Skylift 1100, stepless hydraulic cab elevation
Eye level	approx. 52'6" (16 m)

#### Undercarriage

Model	PR400/840
Tracks	flat grouser shoes 3'11" (1,200 mm)

#### K28 Port Heavy Lift



Lift capacities are stated in pounds. Values in [ ] are stated in metric tons. Indicated figures are based on ISO 10567 and do not exceed 75% of tipping and 87% of hydraulic capacity and machine standing on firm, level supporting surface. Loads are valid for 360° with machine support outriggers. Lifting capacities do not include working equipment such as orange peel grapples, magnets, clamshells, etc. The load point is the center line of the attachment pivot mounting pin on the stick. Their weights must be deducted from the numbers indicated in the lift charts. Please contact SENNEBOGEN or your local dealer for optimum attachment selection. The operator/user of the machine should be fully acquainted with the operator's & safety manuals provided by SENNEBOGEN. Capacities apply only to the machine as originally manufactured and equipped by SENNEBOGEN.

# Lift Capacities - 895 E

## Working Equipment K32 Port

Reach	105' (32 m)
Boom	52'6" (16 m)
Stick	50'10" (15.5 m)

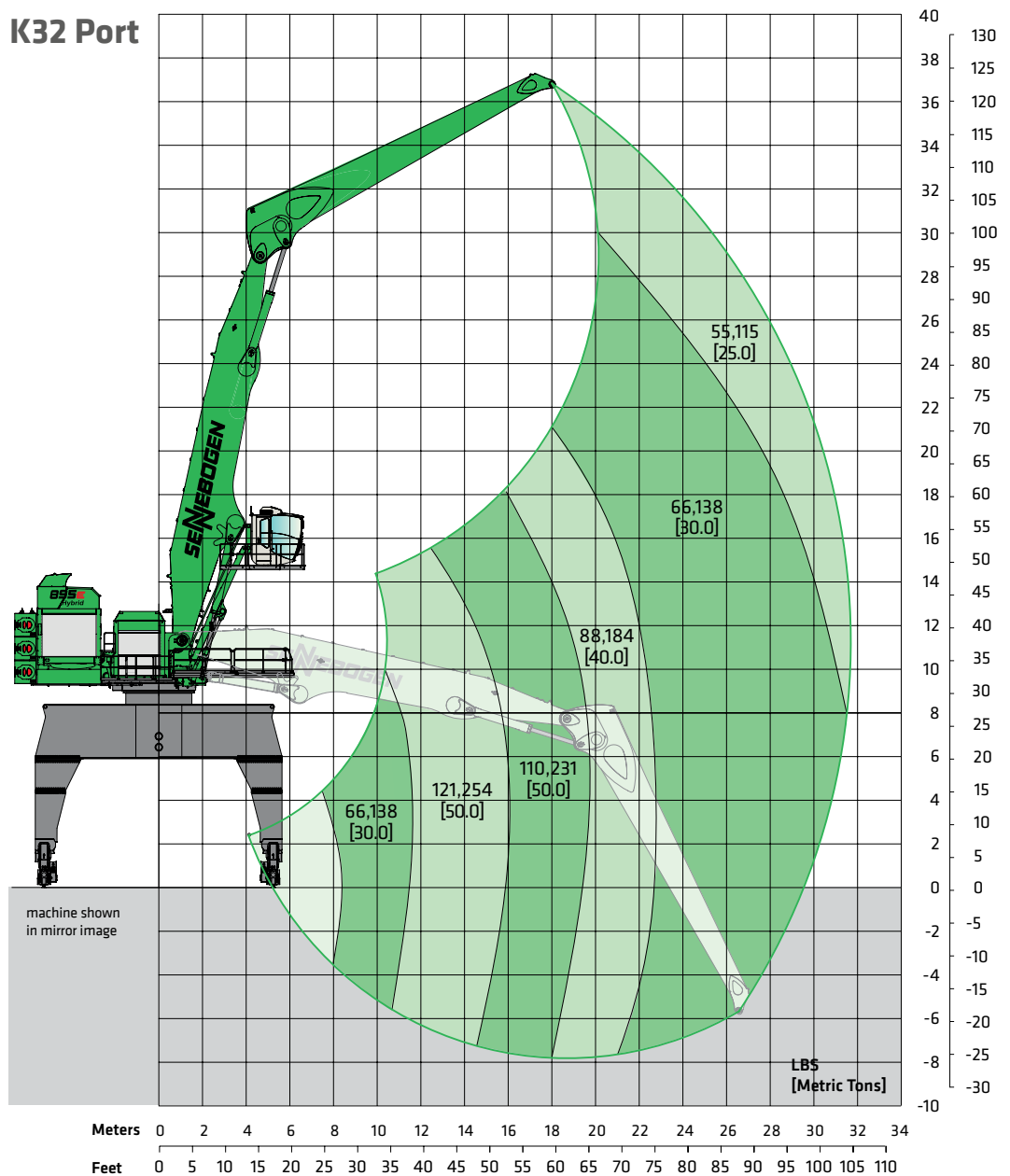
## Operator's Cab

Model	Portcab, Skylift 1100, stepless hydraulic cab elevation
Eye level	approx. 54'2" (16.5 m)

## Undercarriage

Model	PM 400/840
Tracks	14.00-24 (20x) solid rubber

## K32 Port



Lift capacities are stated in pounds. Values in [ ] are stated in metric tons. Indicated figures are based on ISO 10567 and do not exceed 75% of tipping and 87% of hydraulic capacity and machine standing on firm, level supporting surface. Loads are valid for 360° with machine support outriggers. Lifting capacities do not include working equipment such as orange peel grapples, magnets, clamshells, etc. The load point is the center line of the attachment pivot mounting pin on the stick. Their weights must be deducted from the numbers indicated in the lift charts. Please contact SENNEBOGEN or your local dealer for optimum attachment selection. The operator/user of the machine should be fully acquainted with the operator's & safety manuals provided by SENNEBOGEN. Capacities apply only to the machine as originally manufactured and equipped by SENNEBOGEN.



# Lift Capacities - 895 E

## Working Equipment K38 Port

Reach	124'8" (38.0 m)
Boom	70'6" (21.5 m)
Stick	60'8" (18.5 m)

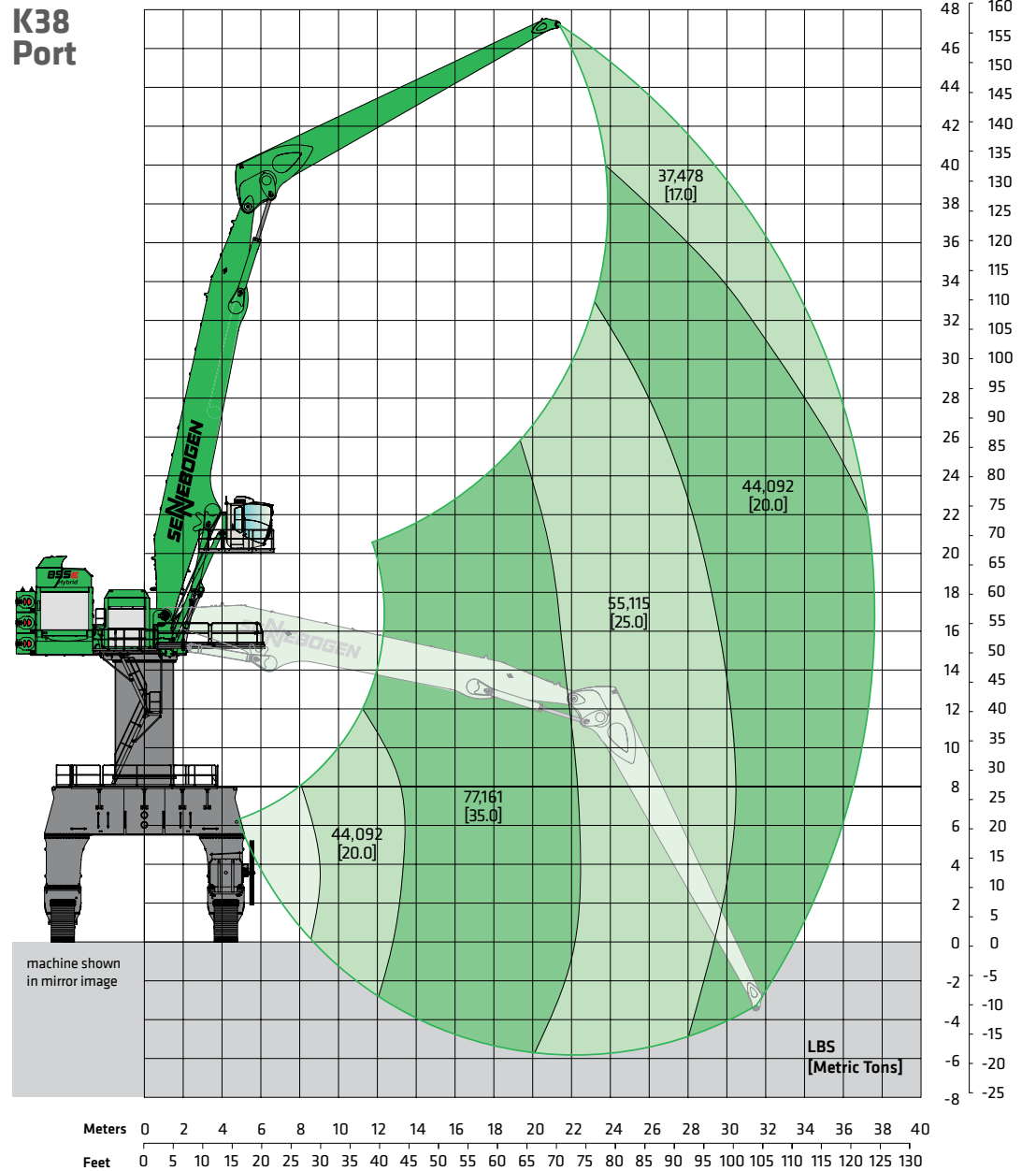
## Operator's Cab

Model	Portcab, Skylift 1100, hydraulic cab elevation
Eye level	approx. 72'2" (22 m)

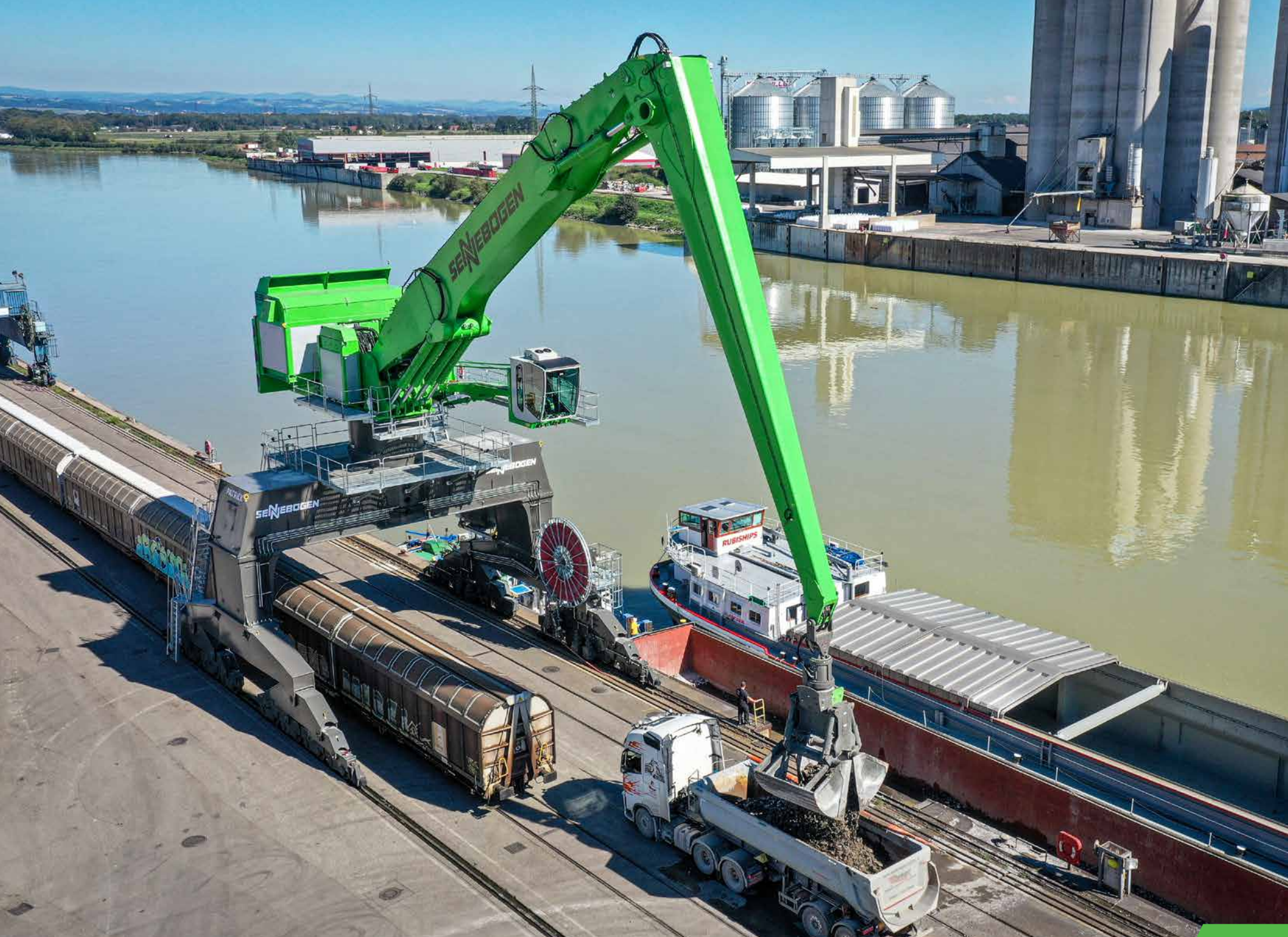
## Undercarriage

Model	PR400/840
Tracks	flat grouser shoes 3'11" (1,200 mm)

## K38 Port

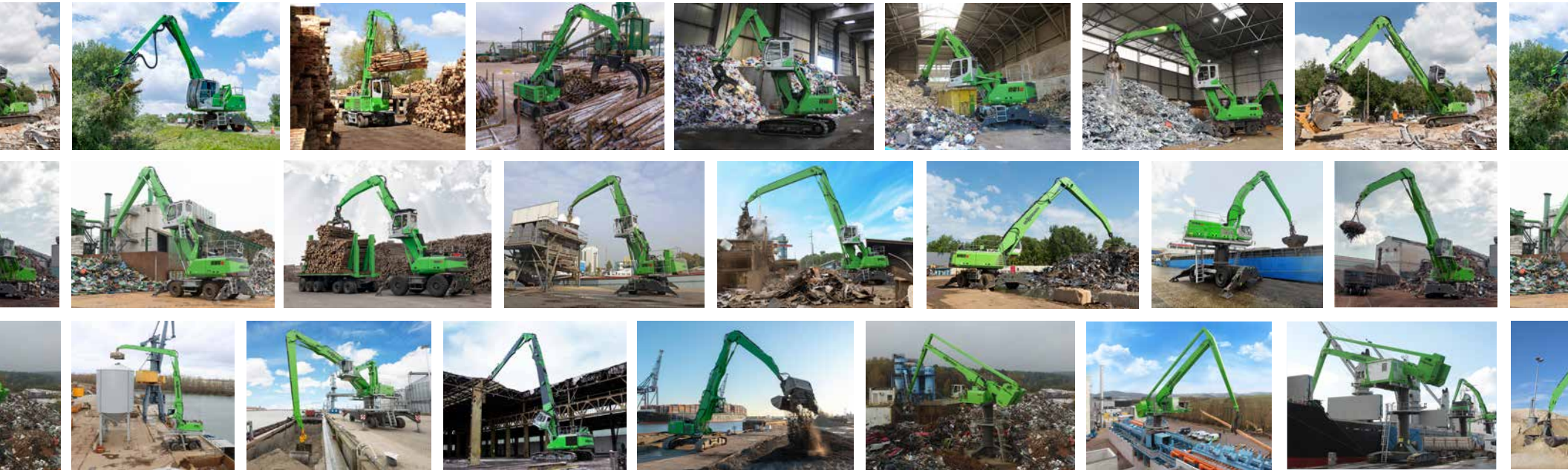


Lift capacities are stated in pounds. Values in [ ] are stated in metric tons. Indicated figures are based on ISO 10567 and do not exceed 75% of tipping and 87% of hydraulic capacity and machine standing on firm, level supporting surface. Loads are valid for 360° with machine support outriggers. Lifting capacities do not include working equipment such as orange peel grapples, magnets, clamshells, etc. The load point is the center line of the attachment pivot mounting pin on the stick. Their weights must be deducted from the numbers indicated in the lift charts. Please contact SENNEBOGEN or your local dealer for optimum attachment selection. The operator/user of the machine should be fully acquainted with the operator's & safety manuals provided by SENNEBOGEN. Capacities apply only to the machine as originally manufactured and equipped by SENNEBOGEN.





# OUR LINEUP OF PURPOSE-BUILT MATERIAL HANDLERS



**SENNEBOGEN**®

**SENNEBOGEN LLC**  
1957 Sennebogen Trail  
Stanley, NC 28164 USA

Phone +1 (704) 347-4910  
Fax +1 (704) 347-8894  
Email [sales@sennebogenllc.com](mailto:sales@sennebogenllc.com)