

# 875E

**GREEN HYBRID MATERIAL HANDLER**



Cummins X15, Tier 4F  
524 HP (391 kW)



Rubber Tired (M) - 374,785 lb (170,000 kg)



Crawler (R-HD) - 319,880 lb (145,095 kg)

# PURPOSE-BUILT – TO SUIT **YOUR** PURPOSE

## We're building smarter to build *your* business.

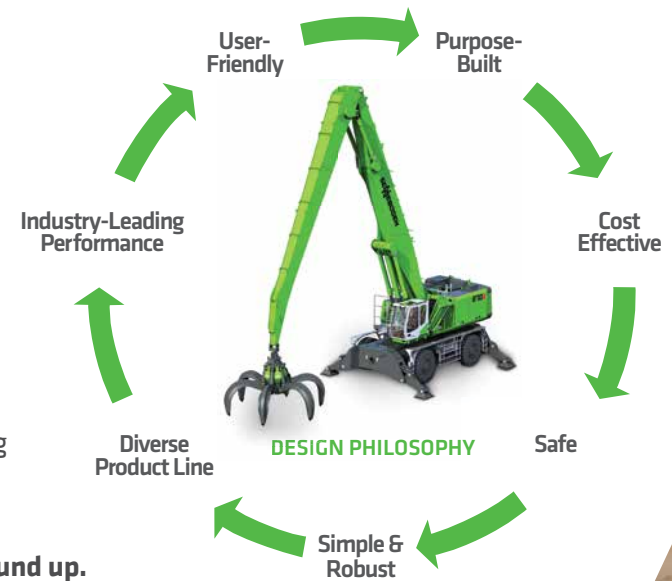
Every SENNEBOGEN material handler begins with you, our customer, and the challenges you face every day. Our singular focus leads us to the simplest, most efficient engineering solutions.

With our Green Hybrid series of purpose-built material handlers, we're meeting our commitment to help you safely move more material at a lower cost:

- Innovative energy recovery system saves costs with every lift
- Interchangeable components across multiple platforms
- Industry standard parts for service & repairs
- Intelligent hydraulics in place of complex electronics
- Robust structures matched to heavy loads and stresses

Now in our third generation as a family-owned business, SENNEBOGEN takes pride in understanding the needs of our customers. Thanks to our customers' feedback we've been able to continually develop and deliver the world's best material handling solutions since 1952.

When you purchase a SENNEBOGEN machine, you'll know it was purpose-built for you **from the ground up**.







# Lift More. Pay Less.

SENNEBOGEN's innovative Green Hybrid energy recovery system saves energy costs every time it lifts a load. By utilizing power more efficiently, the 875 will outlift larger conventional machines while it consumes 30% less energy and reduces emissions.

| QUICK SPECS      | 875 M<br>RUBBER TIRED   | 875 R-HD<br>CRAWLER TRACKS |
|------------------|-------------------------|----------------------------|
| Net Power        | 524 HP (391 kW)         | 524 HP (391 kW)            |
| Operating Weight | 374,785 lb (170,000 kg) | 319,880 lb (145,095 kg)    |
| Magnet System    | 33 kW                   | 33 kW                      |
| Max reach        | 95'2" (29.0 m)          | 95'2" (29.0 m)             |



## Power

With its engineered efficiency and Green Hybrid energy recovery system, the 875 reduces operating costs and your environmental footprint whether you choose diesel power, electric drive or a combination of the two.

For reliable performance and ease of maintenance, SENNEBOGEN diesel machines are powered by industry-preferred Cummins engines.

## Cab Configurations and Elevations

The elevating Maxcab, now with bulletproof windshield and skylight as standard equipment, allows an unobstructed view in all directions for increased safety and productivity, even under harsh and adverse conditions.

Optional features include:

- Windshield protective guard
- Skylight protection guard and/or FOPS guard
- Floor window

### Cabs

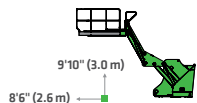


Maxcab Industry



Mastercab

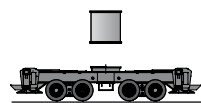
### Cab elevations



E300/260



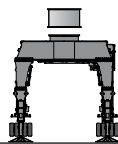
Skylift 700/900



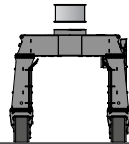
Rubber Tired



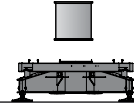
Crawler



Rubber Tired Gantry



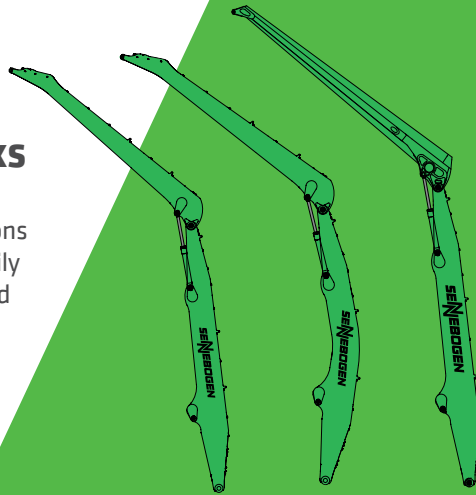
Crawler Gantry



4-Point Pedestal

## Booms and Sticks

A wide choice of powerful boom and stick configurations allows the 875 to adapt easily to match the specific lift and reach requirements of your operations.



## Attachments

SENNEBOGEN grapples and magnets complete your purpose-built solution with the same reliability as our 875 material handling machines. Your machine will also accept a full range of standard attachments from all brand-name manufacturers including:



Orange peel grab



Clamshell grab



Magnet plate



Timber grab

SENNEBOGEN magnet systems are powered by Baldor generators with Hubbell controllers

## Platforms

The modular design of the 875 adapts easily to any required mounting for gantries, rail cars, barges and ship applications.







## UNDERCARRIAGE

### ■ Stable footprint

The centered point of rotation for the swing bearing allows for 360° equal lift capacity

### ■ Swing system

The large-diameter slewing ring provides excellent cycle times and swing torque for large loads

### ■ Multiple platforms

The modular 875 is designed to adapt to standard wheeled, tracked and pedestal mounts

## CAB

### ■ Elevating Maxcabs

Various cab configurations maximize safety, loading accuracy and stability. Optionally available with an elevated fixed cab

### ■ Joystick steering

Unobstructed view for operator with highly responsive controls

### ■ SENCON

Advanced diagnostic system with user-friendly multicolored interface, available in multiple languages

### ■ Entry/exit

Maxcab sliding door with permanent catwalk for safe, easy entry and exit

### ■ Superior visibility

Large bulletproof glass front window and skylight as well as large side windows supplemented by 2-camera system are standard. Also available with glass floor

## HYDRAULIC SYSTEM

### ■ Purpose-built design

Fully hydraulic controls require no special software to troubleshoot

### ■ Hybrid Technology

SENNEBOGEN's exclusive Green Hybrid captures energy on each downstroke of the boom, and releases it as "free" load-lifting power on each upstroke

### ■ HydroClean filtration

3-micron oil filtering with 99.95% efficiency absorbs water, prevents acid generation

### ■ Convenient servicing

All test ports are easily accessible in one place

## UPPER CHASSIS

### ■ Upper carriage

Guarding surrounds upper deck to enhance safety for service technicians

### ■ One-piece center frame

Optimizes distribution of stresses and machine balance from boom pivot to counterweight

### ■ Reversible fan

Closed circuit drive with axial displacement pump allows fast change between normal and reverse

### ■ OSHA-compliant

Continuous 3-point contact access to upper deck with handrails and guarding from ground to cab

### ■ Longitudinal engine mount

Allows safe and easy access and unequaled fuel efficiency due to efficient cooling

### ■ Automatic lubrication

Extend component life with no waste, no spill hazards

## BOOM & STICK

### ■ Limit switches

Limit switches on the boom and stick cylinders prevent high pressure peaks to provide a cushion for rod movement and prevent attachments from colliding with the cab

### ■ Cylinder protection

The boom and stick have been designed specifically for material handling applications. Hydraulic cylinders are mounted and protected by an open box frame to ensure uptime

### ■ Boom pivot

Purpose-designed boom mounting point on the chassis for enhanced balance and lifting capacity

## SAFETY

### ■ Safety rails

Full guarding on upper decks provide safety for technicians on North American models

### ■ Fuses and relays

All fuses and relays are clearly labeled and easily accessible in a centrally located terminal box

### ■ Sliding door

The door slides open for safe ease of entry and exit from the cab

### ■ Bulletproof glass

Bulletproof windshield and skylight are standard on all new SENNEBOGEN models

# HEALTH & SAFETY: THE FIRST STEP TO PRODUCTIVITY

Bulletproof windshield and skylight are now standard on all new SENNEBOGEN material handlers.

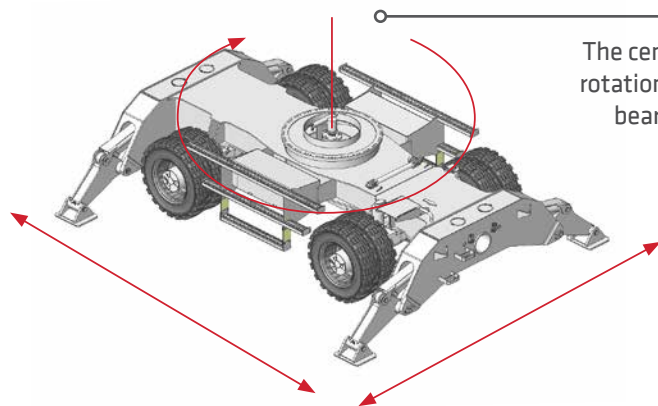
Various optional guarding packages available to meet industry safety requirements.



## SENNEBOGEN is renowned as the industry leader in protecting people and downtime.

Safety-conscious owners look for equipment that prevents liability costs and protects their most valued assets. SENNEBOGEN works closely with the operators and technicians who know our equipment best. We listen to their ideas to make our machines the safest on any jobsite.

That's why ease of access, ground-to-cab guarding, sliding door cab entry, 360° visibility, cameras, and travel alarm are all standard features of your SENNEBOGEN.



The centered point of rotation for the swing bearing minimizes tipping risk.

Handrails around the upper deck and anti-slip walking surfaces provide a safe working environment for service and maintenance crews.

All daily service is completed on the ground with easy access to all maintenance points.



Safe access to the upper deck is achieved with a permanent three-point contact ladder with railings.

Accessible safety switches including emergency shut-off, battery disconnect, and travel alarm.





Dual cameras with views to the rear and right side are standard equipment.

Maxcab's sliding door and guarded permanent catwalk provide the safest entry and exit in the industry.



**Optional Mastercab's maximized window area (shown)** and elevating mount give the operator an unobstructed wide-angle view of the work zone.

**Intuitive joystick controls** connect the operator seamlessly to the industry's most responsive hydraulic system for precise, easy handling.

**Ergonomic comfort and climate control features** keep operators alert by adapting to individual preferences to fight fatigue through long shifts.



# BEYOND THE MACHINE

SENNEBOGEN is on a mission to deliver the lowest Total Cost of Ownership with industry-leading aftersales support. Factory technical support, 55 million parts in inventory, and 24/7 parts availability means less downtime and more production.

- Our 100,000 sq. ft. (9,300 m<sup>2</sup>) headquarters in Stanley, NC is a multipurpose facility dedicated to supporting customers "beyond the machine."
- Our coast-to-coast network of factory-trained distributors, authorized service providers, and technicians sets the industry standard for outstanding field service.
- SENNEBOGEN application specialists provide customers and dealer sales staff with expert insight into the unique challenges.
- SENNEBOGEN's in-house engineering solutions provides customers with custom machine solutions to meet their application.

The largest inventory of material handler parts in the Americas ensures fast delivery for repairs and service to every fielded SENNEBOGEN machine currently in operation.

**98% ORDER FULFILLMENT  
WITHIN 24 HOURS**





# TRAINING CENTER OF EXCELLENCE

Our dedicated Training Center in Stanley, North Carolina provides both primary and advance courses free of charge for our customers. This free training is the same level as Dealer's and Authorized Service Providers (ASP's) receive.

## Purpose-built For America's Best-Trained Technicians

The main demonstration bay allows hands-on access to machines and the meeting rooms and classrooms are all equipped with the technology required for today's interactive instruction methods.

Truly a Center for developing excellence in service and support for dealers, ASPs, and customer personnel. The SENNEBOGEN Training Center has earned accolades for the quality of the instructors, facilities and materials.

## Free Training Courses Include:

Service • Parts Training • Tree Care • Operator Familiarization

Visit us online at  
[www.sennebogen-na.com/training](http://www.sennebogen-na.com/training)



### Service Level 1

**Class Size:** 8 Students

**Required:** Basic Technical Knowledge

**Course Content:**

- Machine Safety, Operation & Functions
- Preventive Maintenance
- Read & Understand Hydraulic & Electric Schematics
- Basic Troubleshooting:  
Magnet System, Hydraulics, Electrics

### Service Level 2

**Class Size:** 8 Students

**Required:** Completion of Level 1 Class

**Course Content:**

- Remote Troubleshooting
- Component Training & Repair
- Failure Analysis
- In-Depth Troubleshooting:  
Magnet System, Hydraulics, Electrics

———— **Course fees:** No charge to SENNEBOGEN dealers, staff and customers. ————

Courses offered in English and Spanish sessions

5 Day Courses

# PROVEN UPTIME

To find out how to make SENNEBOGEN machines easier to maintain than any other material handler, we ask the technicians who service our equipment.

Our support team, instructors, dealers, and customers are all in constant contact to troubleshoot problems and find permanent solutions. Even our senior management and the Sennebogen family take a hands-on approach to product improvement by meeting customer mechanics and operators in their own shops and yards.

Their innovative ideas help us to deliver machines that spend more time on the job and less time in the shop.



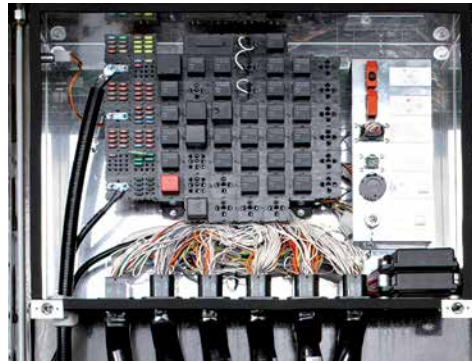
SENNEBOGEN Uptime Kits are matched to specific service tasks and machines. Hundreds of assorted parts, connectors, fittings, and electrical components are easy to locate and access.

In the shop or in the field, these fully-stocked kits bring together all the parts and material required for a specific service need, conveniently sorted and organized in one place.





Solid-steel, top-opening compartment access doors on the sides, top of the upper deck, and above the engine compartment maintain a secure fit even after repeated opening for service access.



All the fuses and relays are in a centrally located box for easy access.



Simple hydraulic controls replace complex electronics, so the 875 requires no special software or "black box" components to troubleshoot your machine.



The large reversing fan provides up to 45% more cooling surface than comparable machines.



## SENCON

The advanced SENCN diagnostic and reporting system presents a multicolored user-friendly interface, now available in multiple languages.



With no bypass in the fluid circuit, SENNEBOGEN's HydroClean system continuously protects hydraulic components with industry-leading 3-micron oil filtration.



Automatic central lubrication, standard on all SENNEBOGEN machines, saves servicing time every day while improving component life cycles.



# BIG SAVINGS

“Green Efficiency” powers a new generation of machines that reduce operating costs through every working hour and on every lift.

All SENNEBOGEN E-Series machines are built on layers of smart engineering and system innovations aimed at doing more with less. Our “Green Efficiency” solution combines with multiple design features that utilize power more effectively to achieve **savings of up to 50%** compared to traditional diesel-fueled machines.

This design also adds structural strength to the upper carriage with two mount frame plates running consistently from boom pin mount to counterweight.



Optional eGreen electric-drive systems reduce energy costs up to 50%, reduce vibration wear and maintenance cycles, and eliminate refueling stops.



## 50% LOWER OPERATING COSTS WITH SENNEBOGEN ENERGY SOLUTIONS



# LITTLE FOOTPRINT




Whether you choose a Tier 4F engine or electric motor to power your 875, our efficient hydraulics and green hybrid technology provide eco-friendly material handling.

**REDUCE ENERGY  
COSTS BY 30%  
WITH GREEN HYBRID TECHNOLOGY**

By utilizing power more efficiently, the 875 will outlift larger conventional machines while it consumes **30% less energy** and reduces emissions.

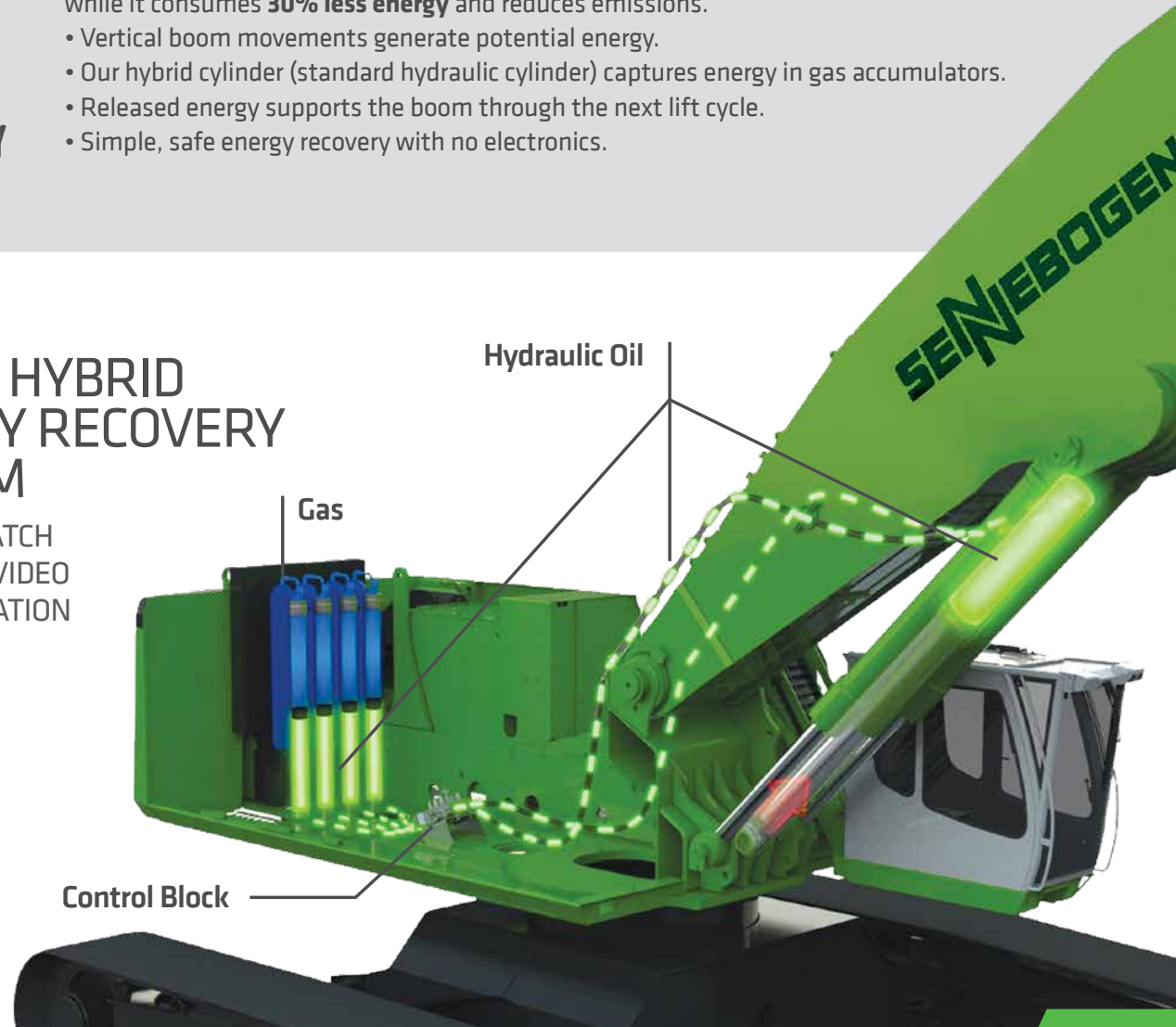
- Vertical boom movements generate potential energy.
- Our hybrid cylinder (standard hydraulic cylinder) captures energy in gas accumulators.
- Released energy supports the boom through the next lift cycle.
- Simple, safe energy recovery with no electronics.

Eco-mode engine control automatically reduces engine speed to 1800 rpm.

| Operating<br>ECO Mode   | Automatic<br>Idle   |                          | Stop  |
|---|---|--------------------------|---|
|  |  |                          |  |
| 2000 ECO<br>min <sup>-1</sup>   | 1800<br>min <sup>-1</sup>   | 800<br>min <sup>-1</sup> | 0<br>min <sup>-1</sup>  |
| 0 s   | 5 s   | 8 s                      | 5 min   |

## GREEN HYBRID ENERGY RECOVERY SYSTEM

SCAN TO WATCH  
AN ONLINE VIDEO  
DEMONSTRATION

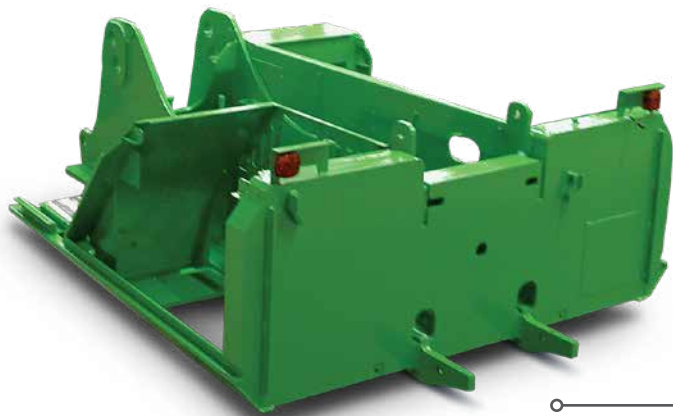


# ATTENTION TO DETAILS MAKES US STRONGER

## Strong and smart, SENNEBOGEN machines stand up to your toughest work environments.

Reliability and durability are engineered into the details of your 875, from heavy-duty structural components to natural flow-through engine cooling. Each of SENNEBOGEN's manufacturing, fabrication, and assembly facilities is ISO-certified to deliver the same outstanding quality in every machine, every time.

By going to work every day and staying on the job year after year, your 875 is built to deliver the best return on your equipment investment.



Dual motors extend swing system life while improving cycle times and torque.



The swing bearing is equipped with automatic lubrication to withstand extreme 360° duty cycle operation.

A continuous flange ring reduces stress and improves distribution of swing loads to the undercarriage.

The upper carriage is built around a large, continuous one-piece center frame for added structural strength and improved air flow.

Fully hydraulic controls require no special software to troubleshoot. All test ports are easily accessible in one place.

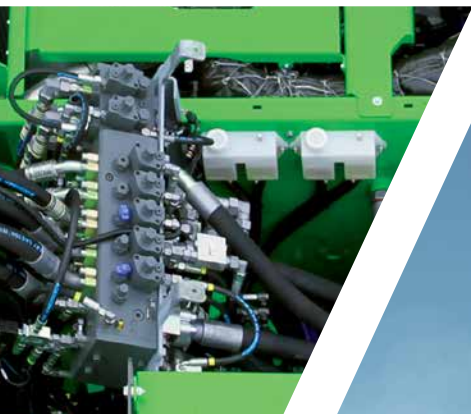


By fabricating booms and sticks in our own shops, SENNEBOGEN eliminates welding stresses inside the box structure and maximizes service life.



Low-vibration engine mounting reduces wear on components and lowers sound levels.





SEE HOW OUR QUICK  
COUPLER ADAPTS  
THE 875 TO ANY LOAD,  
EASILY AND QUICKLY



Built on SENNEBOGEN's renowned expertise with intelligent hydraulics, the 875 and its Green Hybrid system minimize the need for delicate electronics and computers, preventing their related failures and the associated downtime in harsh environments.



# PURPOSE-BUILT FACILITIES

With nearly 1,000,000 sq. ft. (93,000 m<sup>2</sup>) of production space in our four manufacturing facilities in Europe, every step of production at SENNEBOGEN is planned to serve individual customer needs. Every critical component and process is completed in-house to assure quality, efficiency, and flexibility on the production line.

- We fabricate our own booms and sticks
- Our lineup is based on a full line of interchangeable platforms
- Our plants are designed to customize each machine, built-to-order
- Your machine is fully inspected and live-tested before it leaves the factory

Our four factories in Europe support the full range of capabilities for SENNEBOGEN to machine, fabricate, and assemble all major components to our own standards, in-house.

*(Pictured here is our main plant in Straubing, Germany)*



Modular components used across multiple products allow SENNEBOGEN to deliver purpose-built machines competitively. Shared systems also streamline aftersales parts inventories for customers and their local SENNEBOGEN distributors.







Every configuration of a SENNEBOGEN machine begins identically until the final stage of assembly. The unit is then mounted on your choice of undercarriage or platform and completed with your preferred equipment and choice of cab.



# THE RIGHT TOOLS FOR EVERY JOB ENSURES MAXIMUM PRODUCTIVITY

Keep your 875 E “purpose-built” from end to end with your choice of genuine SENNEBOGEN attachments.

SENNEBOGEN grapples, lifting magnets, and clamshell buckets are all heavy-duty, production-rated tools, built to SENNEBOGEN's exacting standards for reliable, efficient service. Specified to match the fittings and power ratings of your SENNEBOGEN material handler, these attachments ensure that you always get the most productivity from your machine.

Available from our network of SENNEBOGEN Dealers and Authorized Service Providers, *green machine* attachments qualify as part of your total SENNEBOGEN Capital financing package.



## Orange Peel Grapples

Built to grab and hold large loads efficiently with easy handling and reliable service

- 4-tine and 5-tine scrap grapples
- From .5 to 5.0 yd<sup>3</sup>
- Protected hose routings and hose guarding
- Tine tips 44% stronger than Hardox 400
- Fully sealed Rotobec rotator design with 360° rotation
- Self-contained cylinders with integrated guarding

## Lifting Magnets

Made-in-America magnets engineered to operate 24/7 with consistent lifting strength throughout every working shift

- Deep field and extra deep field models with aluminum or copper coils
- Optimized for true 75% duty cycle
- Available in common sizes from 30" (762 mm) to 72" (1828 mm)
- Balanced for superior lift-to-weight ratios
- Heavy-duty cast or fabricated casings
- High-temperature insulation
- Durable manganese bottom plate







## Mag Grapples

Combination 4-tine grapple and magnet to sort and separate scrap metals from mixed loads and debris

- 11 models from .75 to 1.5 yd<sup>3</sup>
- Magnets from 30" to 44" diameter
- 360° rotation designed for high radial and axial loads
- Removable cylinder guards for ease of service



360°

## Clamshell Buckets

- Light, standard, and heavy-duty models
- Sizes from 1.5 yd<sup>3</sup> to 14 yd<sup>3</sup> capacity
- Rotobec 5,000 psi quad-cylinder design
- Fully sealed 360° rotation
- Bolt-on cutting edges



# SPECIFICATIONS INDEX

## 875 M “E”

|   |       |
|---|-------|
| Technical Specifications .....          | 22    |
| Standard / Optional Equipment .....     | 23    |
| Dimensions / Transport Dimensions ..... | 24-25 |
| Lifting Capacities - B26 .....          | 26    |

## 875 R-HD “E”

|   |       |
|---|-------|
| Technical Specifications .....          | 28    |
| Standard / Optional Equipment .....     | 29    |
| Dimensions / Transport Dimensions ..... | 30-31 |
| Lifting Capacities - K18 .....          | 32    |
| Lifting Capacities - K21 .....          | 33    |
| Lifting Capacities - B24 .....          | 34    |
| Lifting Capacities - K29 .....          | 35    |







# Technical Specifications - 875 M “E”

| ENGINE            |   |
|-------------------|---|
| model             | Cummins X15 FR118131  |
| type              | in-line, 6 cylinder, cooled exhaust gas recirculation, DPF diesel particulate filter water cooled     |
| emission          | EPA Tier 4F   |
| net power         | 391 HP (292 kW) @ 1,800 rpm   |
| injection         | high pressure common-rail   |
| aspiration        | turbo charged, charge air cooled  |
| fuel tank         | 555 gal (2100 L)  |
| air filtration    | direct flow filtration system dual stage filter with pre-filter                                       |
| control           | integrated ECM automatic idle - stop eco mode   |
| HYDRAULIC SYSTEM  |   |
| system type       | LUDV load sensing pilot pressure controlled open center   |
| pump type         | variable-displacement axial-piston pump   |
| max. pressure     | 5,076 psi (350 bar)   |
| hydraulic tank    | 370 gal (1400 L)  |
| filtration        | dual filtration system 3 micron (HydroClean)  |
| COOLING           |   |
| cooling type      | water cooled, charge air cooling, coolant cooling   |
| hydraulic / water | hydraulic fan drive axial piston pump, reversible fan thermostatically controlled, closed loop system |
| charge air        | direct fan drive  |

| ELECTRICAL             |   |
|------------------------|---|
| alternator             | 24 V, 105 A   |
| starter                | 24 V, 9 kW  |
| battery                | 2 x 210 Ah  |
| lights                 | 2 x cab roof, type halogen<br>2 x frame upper carriage, type H4   |
| SWING SYSTEM           |   |
| swing speed            | 0 - 5 rpm   |
| swing hydraulic        | closed loop   |
| drive                  | axial piston motor driving planetary gearbox, integrated brake valves   |
| swing brake            | multidisc brake, spring loaded  |
| swing bearing          | external teeth sealed triple roller bearing   |
| UPPER CARRIAGE         |   |
| design                 | torsion-resistant box design, precision crafted, steel bushings for boom mountings. Service-friendly design, engine installed in the longitudinal direction   |
| TRAVEL / UNDERCARRIAGE |   |
| type                   | rubber tired MS210  |
| drive                  | all-wheel drive powered by a variable-displacement hydraulic motor with direct-mounted, automatic brake valve and 2-gear power shift transmission<br><br>planetary axles with integrated steering cylinder and dual-circuit service brake |
| speed                  | 0-6 mph (0-9.6 kph)   |
| tires                  | solid rubber 14.00-24 (16x)   |
| parking brake          | spring-loaded multidisc brake   |
| steering               | joystick steering   |
| safety                 | travel alarm  |

| REFILL CAPACITIES                  |                         |
|------------------------------------|-------------------------|
| fuel tank                          | 555 gal (2100 L)        |
| engine cooling system              | 30 gal (115 L)          |
| engine oil w / filter              | 12 gal (45 L)           |
| hydraulic tank                     | 370 gal (1400 L)        |
| hydraulic system                   | 488 gal (1850 L)        |
| DEF (AdBlue) tank                  | 27.7 gal (105 L)        |
| slewing gear                       | 3.33 gal (12.6 L) each  |
| axle hub (front axle)              | 1.32 gal (5.0 L) each   |
| axle hub (rear axle)               | 1.32 gal (5.0 L) each   |
| differential                       | 10 gal (38 L)           |
| gear reducer                       | 0.4 gal (1.5 L)         |
| parking disc brake Type A          | 0.07 gal (0.25 L)       |
| Type B                             | 0.15 gal (0.60 L)       |
| pump distributor gearbox           | 2.25 gal (8.5 L)        |
| slewing ring lubrication reservoir | 0.26 gal (1.0 L)        |
| central lubrication reservoir      | 14.08 lb (4 kg)         |
| WEIGHT                             |                         |
| operating weight                   | 374,785 lb (170,000 kg) |
| MAGNET SYSTEM                      |                         |
| rating                             | 25/33 kW                |
| voltage (magnetized)               | 230 V                   |
| current (cold condition)           | 137.5 Amps              |
| controller                         | Hubbell                 |
| generator                          | Baldor                  |
| drive                              | hydraulic               |

Subject to technical modification.



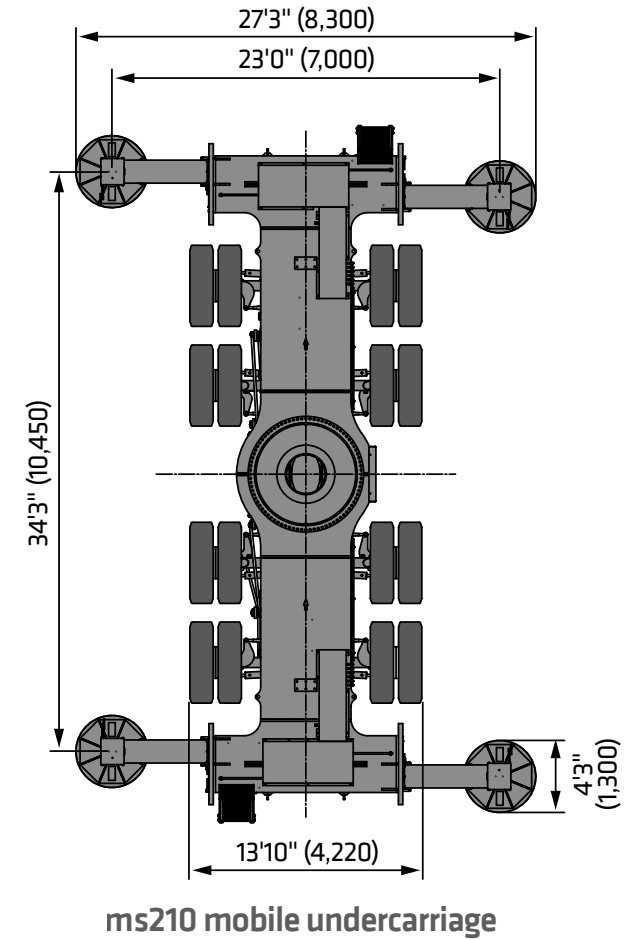
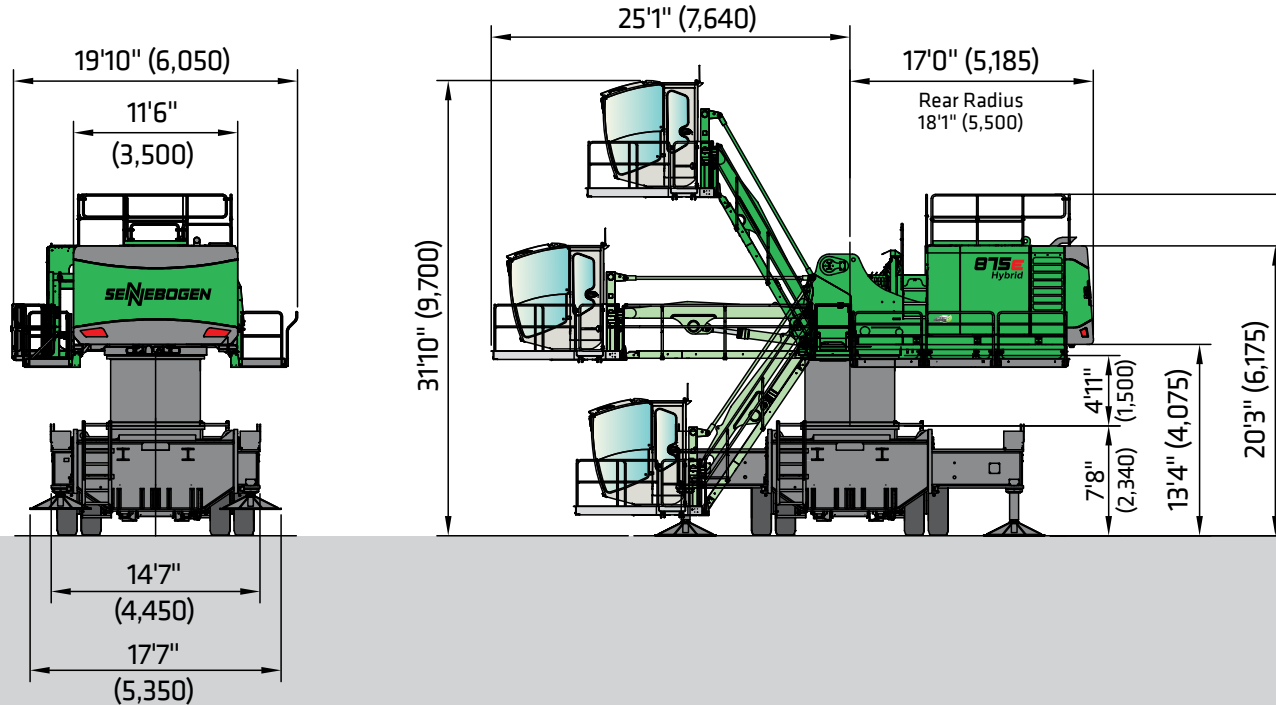
# Standard / Optional Equipment - 875 M “E”

| ENGINE   |   | OPERATOR'S CAB (Maxcab Industry)                |   | UNDERCARRIAGE  |   |
|--|---|---|---|--|---|
| Water separator in fuel line                         | ● | Hydraulic elevating up and out cab e300/260     | ● | Heavy-duty designed material handling undercarriage          | ● |
| Automatic idle / engine stop control                 | ● | Multi-adjustable, air suspended operator's seat | ● | Solid rubber 14.00-24 (16x) incl. intermediate ring          | ● |
| Eco mode   | ● | 3" (76 mm) seat belt                            | ● | MS210 undercarriage with integrated 4-point outrigger system | ● |
| Muffler  | ● | Seat heater                                     | ● | All wheel drive  | ● |
| Visual fuel tank check                               | ● | Automatic climate control (heater / AC)         | ● | Planetary axles with integrated steering cylinders           | ● |
| Engine block & water separator pre-heater            | ○ | Air outlets w / defroster                       | ● | Travel alarm   | ● |
| ELECTRIC   |   |   |   | WORKING EQUIPMENT  |   |
| Battery disconnect switch                            | ● | Storage area for lunch box                      | ● | Purpose-built material handling boom                         | ● |
| Centralized fuse box                                 | ● | Large cup holder                                | ● | Green Hybrid energy recovery system                          | ● |
| Battery jump start connection from ground level      | ● | Fire extinguisher                               | ● | Purpose-built material handling stick                        | ● |
| HYDRAULIC  |   | Tinted windows with safety glass                | ● | Attachment hydraulic line connections with ball valves       | ● |
| Pilot pressure controlled variable displacement pump | ● | Door window as sliding window                   | ● | Safety check valves for stick cylinders                      | ● |
| Thermostatically controlled cooling system           | ● | Radio with USB and SD port, MP3 and Bluetooth   | ● | Safety check valves for boom cylinders                       | ● |
| Centralized hydraulic test ports                     | ● | Removable floor mat                             | ● | Cylinder end position dumping                                | ● |
| Protection covers for pilot pressure control valves  | ● | SenCon diagnostic system                        | ● | Boom hoist limitation  | ● |
| 3 micron dual filtration system                      | ● | Multicolor monitor                              | ● | Bronze bushings connected to automatic lubrication system    | ● |
| Load sensing, flow on demand hydraulic system        | ● | Tilt out front window                           | ● | Stick limitation   | ● |
| Optimized hydraulic pump regulation (GLR)            | ● | Halogen light package on cab roof               | ● | LED light package boom                                       | ○ |
| Visual hydraulic tank check from ground level        | ● | Mechanical hour meter                           | ● | LED light package stick                                      | ○ |
| Attachments open, close & rotation hydraulics        | ● | Sliding door                                    | ● | Purpose-built material handling boom for scrap shears        | ○ |
| Hydraulic tank shut off valve                        | ● | Catwalk w / handrail                            | ● | MAGNET SYSTEM  |   |
| Electrical hydraulic tank pre-heater                 | ○ | 12 V / 24 V power outlet                        | ● | Hydraulic driven generator                                   | ● |
| Biodegradable hydraulic oil                          | ○ | Windshield wiper and washers                    | ● | Magnet controller  | ● |
| Hydraulic circuit for scrap shear                    | ○ | Emergency exit hammer                           | ● | Magnet suspension link                                       | ○ |
| Additional hydraulic circuit slasher                 | ○ | Safety lever                                    | ● | ATTACHMENTS  |   |
| Additional hydraulic circuits                        | ○ | Sun shades                                      | ● | Orange peel grapple  | ○ |
| Attachment return filtration filters (60 µm)         | ○ | Interior lighting                               | ● | Mag grapple  | ○ |
| UPPER CARRIAGE                                       |   | Rain cover front window                         | ● | Clamshell  | ○ |
| Rearview & right side view camera system             | ● | Outside mirror                                  | ● | Magnet   | ○ |
| Automatic lubrication system                         | ● | Optical and acoustic warning system             | ● | Scrap shear  | ○ |
| Anti-slip mats on walking area                       | ● | Positive filtered ventilation (pressurized cab) | ● | Power attachment   | ○ |
| Lockable side doors                                  | ● | Safety check valves for elevating cab cylinder  | ● | Pipe handler   | ○ |
| Handrails on top of upper carriage                   | ● | Foot rest                                       | ● | SWING SYSTEM   |   |
| Mirror left side                                     | ● | Bulletproof windshield                          | ● | 360° protection cover, removable                             | ● |
| Turning signal lights in upper carriage frame        | ● | Bulletproof skylight                            | ● | Electrical driven swing gear pinion lubrication pump         | ● |
| Removable panels                                     | ● | Windshield protection guard                     | ○ |  |   |
| Additional light package                             | ○ | Skylight protection guard                       | ○ |  |   |
| Custom colors  | ○ | Skylight FOPS guard                             | ○ |  |   |
| Seawater paint coating                               | ○ | Polycarbonate side windows                      | ○ |  |   |
|  |   | Additional light package                        | ○ |  |   |
|  |   | Fixed cab elevation                             | ○ |  |   |
|  |   | Operator's cab with floor window                | ○ |  |   |
|  |   | Additional cameras                              | ○ |  |   |
|  |   | Spacious Mastercab                              | ○ |  |   |
|  |   | Skylift cab elevation (elevation 7 m or 9 m)    | ○ |  |   |

Standard Equipment ● Optional Equipment ○

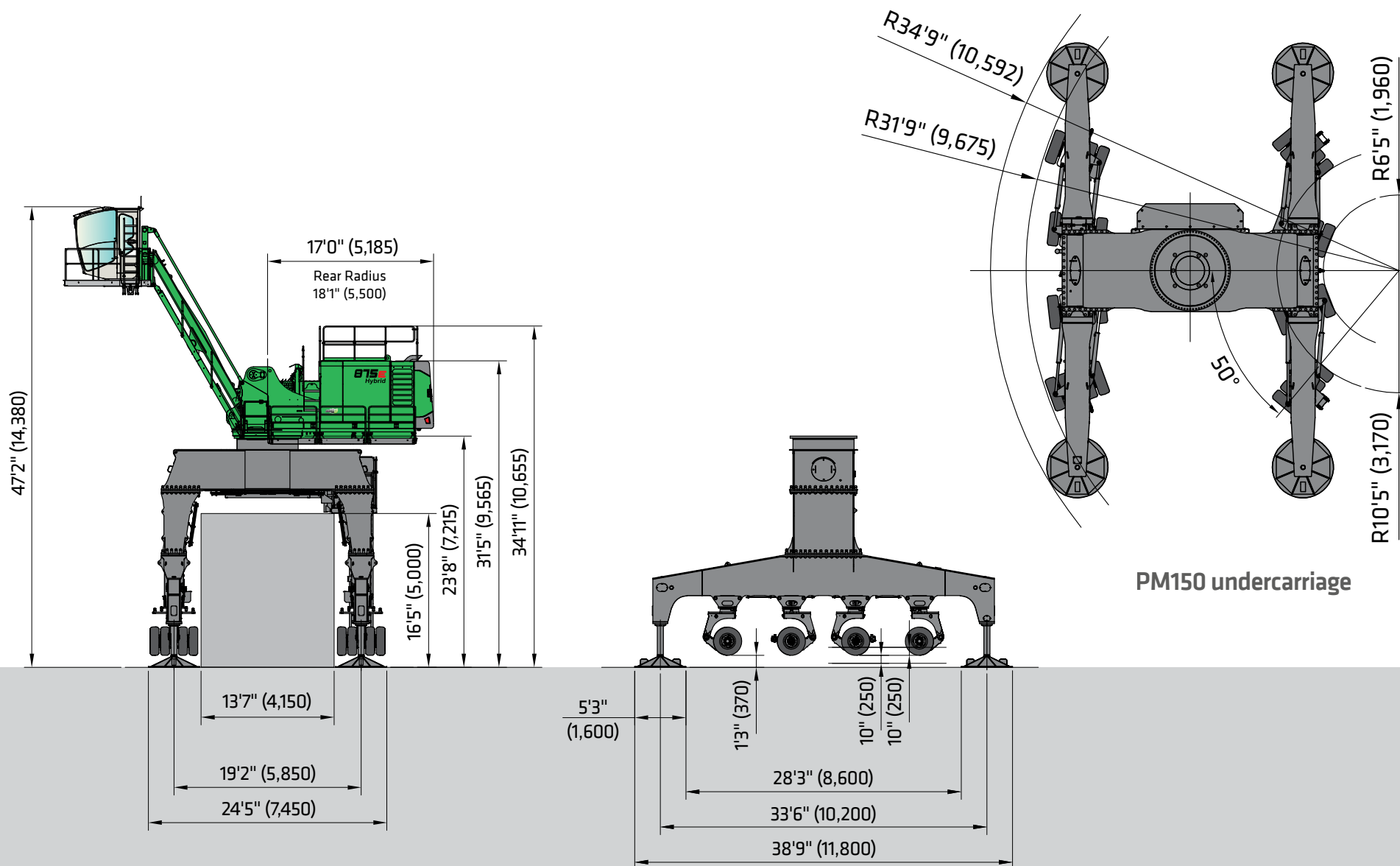
Subject to technical modification.

## Dimensions - 875 M "E"



875 M with ms210 undercarriage and skylift 700 with Mastercab, hydraulically elevating





875 M gantry with PM150 undercarriage and hydraulically elevating Skylift 900 cab elevation and Mastercab

## Lift Capacities - 875 M "E"

### Working Equipment B26

|       |                |
|-------|----------------|
| Reach | 85'4" (26.0 m) |
| Boom  | 47'7" (14.5 m) |
| Stick | 44'3" (13.5 m) |

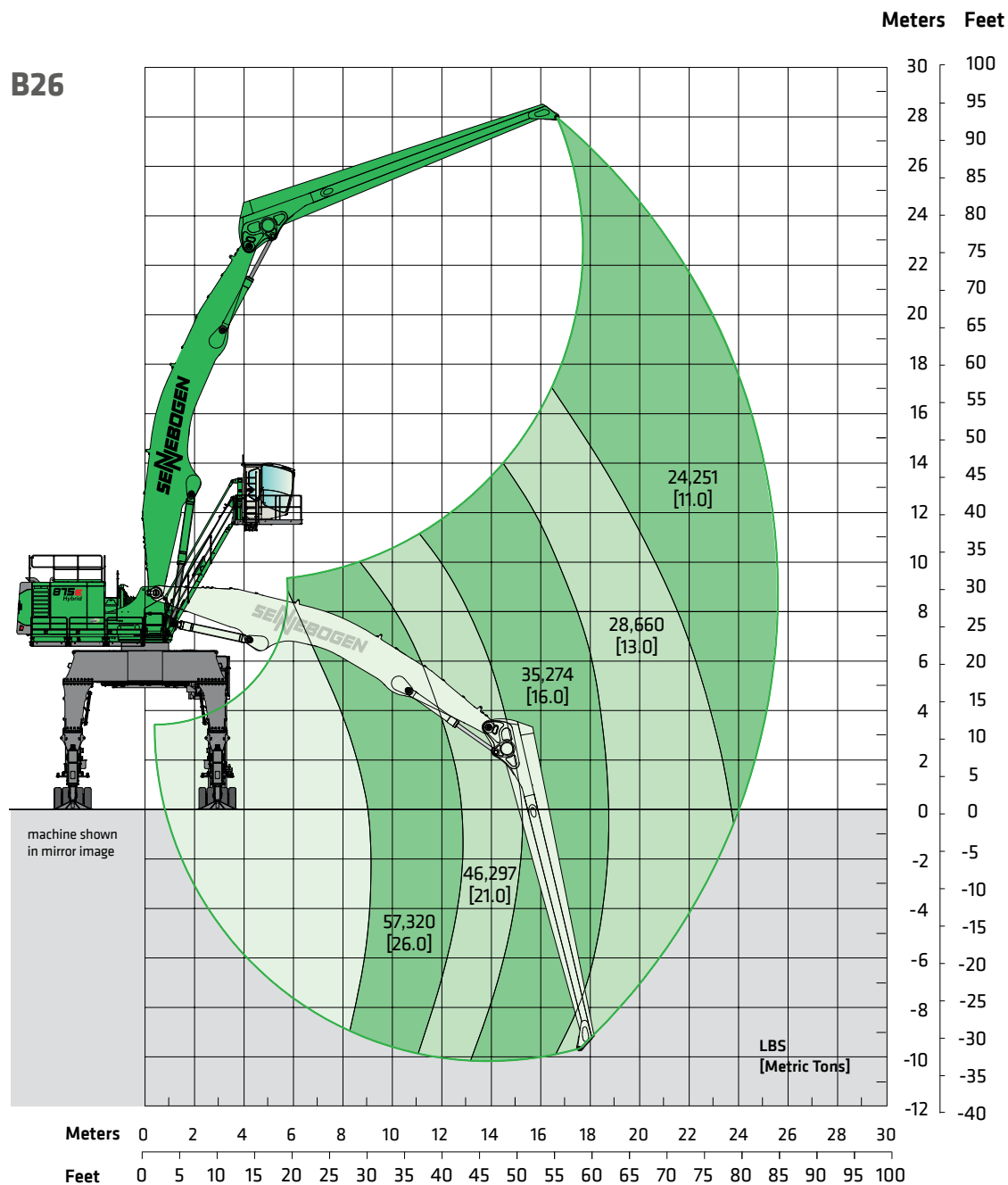
### Operator's Cab

|           |   |
|-----------|---|
| Model     | Skylift 900 with Mastercab hydraulically elevating (option) |
| Eye level | approx. 45' (13.7 m)  |

### Undercarriage

|       |                         |
|-------|-------------------------|
| Model | PM150                   |
| Tires | 16 x 14-24 solid rubber |

B26



Lift capacities are stated in pounds. Values in [ ] are stated in metric tons. Indicated figures are based on ISO 10567 and do not exceed 75% of tipping and 87% of hydraulic capacity and machine standing on firm, level supporting surface. Loads are valid for 360° with machine support outriggers. Lifting capacities do not include working equipment such as orange peel grapples, magnets, clamshells, etc. The load point is the center line of the attachment pivot mounting pin on the stick. Their weights must be deducted from the numbers indicated in the lift charts. Please contact SENNEBOGEN or your local dealer for optimum attachment selection. The operator/user of the machine should be fully acquainted with the operator's & safety manuals provided by SENNEBOGEN. Capacities apply only to the machine as originally manufactured and equipped by SENNEBOGEN.





# Technical Specifications - 875 R-HD “E”

| ENGINE            |  |
|-------------------|--|
| model             | Cummins X15 FR118131   |
| type              | in-line, 6 cylinder, cooled exhaust gas recirculation, DPF diesel particulate filter water cooled      |
| emission          | EPA Tier 4F  |
| net power         | 391 HP (292 kW) @ 1,800 rpm  |
| injection         | high pressure common-rail  |
| aspiration        | turbo charged, charge air cooled   |
| fuel tank         | 555 gal (2100 L)   |
| air filtration    | direct flow filtration system dual stage filter with pre-filter  |
| control           | integrated ECM automatic idle - stop eco mode  |
| HYDRAULIC SYSTEM  |  |
| system type       | LUDV load sensing pilot pressure controlled open center  |
| pump type         | variable displacement axial piston pump  |
| max. pressure     | 5,076 psi (350 bar)  |
| hydraulic tank    | 370 gal (1400 L)   |
| filtration        | dual filtration system 3 micron (HydroClean)   |
| COOLING           |  |
| cooling type      | water cooled, charge air cooling, coolant cooling  |
| hydraulic / water | hydraulic fan drive axial piston pump, reversible fan thermo-statically controlled, closed loop system |
| charge air        | direct fan drive   |

| ELECTRICAL             |   |
|------------------------|---|
| alternator             | 24 V, 105 A   |
| starter                | 24 V, 9 kW  |
| battery                | 2 x 210 Ah  |
| lights                 | 2 x cab roof, type halogen<br>2 x frame upper carriage, type H4   |
| SWING SYSTEM           |   |
| swing speed            | 0 - 5 rpm   |
| swing hydraulic        | closed loop   |
| drive                  | axial piston motor driving planetary gearbox, integrated brake valves   |
| swing brake            | multidisc brake, spring loaded  |
| swing bearing          | external teeth<br>sealed triple roller bearing  |
| UPPER CARRIAGE         |   |
| design                 | torsion-resistant box design, precision crafted, steel bushings for boom mountings. Service-friendly design, engine installed in the longitudinal direction |
| TRAVEL / UNDERCARRIAGE |   |
| type                   | crawler R147/580  |
| system                 | mechanical, extendable tracks   |
| drive                  | independent driven by an axial piston motor through a compact planetary   |
| travel speed           | 0-1.3 mph (0-2.1 km/h)  |
| shoes                  | flat grouser shoes, 3'3" (1,000 mm)   |
| crawler                | B9HDS   |
| steering               | joystick steering   |
| safety                 | travel alarm  |

| REFILL CAPACITIES                  |                         |
|------------------------------------|-------------------------|
| fuel tank                          | 555 gal (2100 L)        |
| engine cooling system              | 30 gal (115 L)          |
| engine oil w / filter              | 12 gal (45 L)           |
| hydraulic tank                     | 370 gal (1400 L)        |
| hydraulic system                   | 488 gal (1850 L)        |
| DEF (AdBlue) tank                  | 27.7 gal (105 L)        |
| slewing gear                       | 3.33 gal (12.6 L) each  |
| pump distributor gearbox           | 2.25 gal (8.5 L)        |
| slewing ring lubrication reservoir | 0.26 gal (1.0 L)        |
| central lubrication reservoir      | 14.08 lb (4 kg)         |
| travel gear                        |                         |
| crawler gantry P156-5850           | 3.65 gal (13.8 L)       |
| crawler R147/580                   | 6.08 gal (23 L)         |
| WEIGHT                             |                         |
| operating weight                   | 319,880 lb (145,095 kg) |
| MAGNET SYSTEM                      |                         |
| rating                             | 25/33 kW                |
| voltage (magnetized)               | 230 V                   |
| current (cold condition)           | 137.5 Amps              |
| controller                         | Hubbell                 |
| generator                          | Baldor                  |

Subject to technical modification.



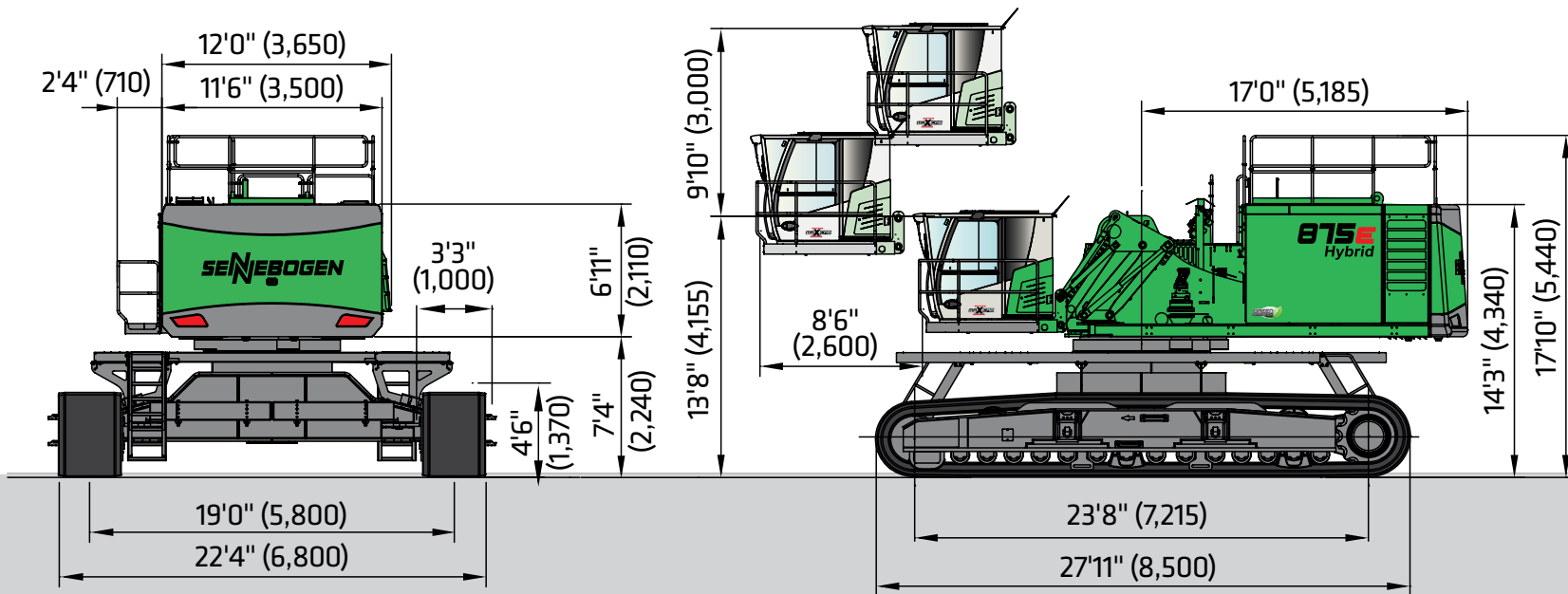
# Standard / Optional Equipment - 875 R-HD “E”

| ENGINE  |   |
|---|---|
| Water separator in fuel line                              | ● |
| Automatic idle / engine stop control                      | ● |
| Eco mode  | ● |
| Muffler   | ● |
| Visual fuel tank check                                    | ● |
| Engine block & water separator pre-heater                 | ○ |
| ELECTRIC  |   |
| Battery disconnect switch                                 | ● |
| Centralized fuse box                                      | ● |
| HYDRAULIC   |   |
| Pilot pressure controlled variable displacement pump      | ● |
| Thermostatically controlled cooling system                | ● |
| Centralized hydraulic test ports                          | ● |
| Protection covers for pilot pressure control valves       | ● |
| 3 micron dual filtration system                           | ● |
| Load sensing, flow on demand hydraulic system             | ● |
| Optimized hydraulic pump regulation (GLR)                 | ● |
| Visual hydraulic tank check from ground level             | ● |
| Attachments open, close & rotation hydraulics             | ● |
| Hydraulic tank shut off valve                             | ● |
| Electrical hydraulic tank pre-heater                      | ○ |
| Biodegradable hydraulic oil                               | ○ |
| Hydraulic circuit for scrap shear                         | ○ |
| Additional hydraulic circuits                             | ○ |
| Attachment return filtration filters (60 µm)              | ○ |
| UPPER CARRIAGE  |   |
| Rearview & right side view camera system                  | ● |
| Automatic lubrication system                              | ● |
| Anti-slip mats on walking area                            | ● |
| Lockable side doors                                       | ● |
| Handrails on top of upper carriage                        | ● |
| Mirror left side  | ● |
| Removable panels  | ● |
| Additional light package                                  | ○ |
| Custom colors   | ○ |
| Seawater paint coating                                    | ○ |
| OPERATOR'S CAB (Maxcab Industry)                          |   |
| Hydraulic elevating up and out cab e300/260               | ● |
| Multi-adjustable, air suspended operator's seat           | ● |
| 3" (76 mm) seat belt                                      | ● |
| Seat heater   | ● |
| Automatic climate control (heater / AC)                   | ● |
| Air outlets w / defroster                                 | ● |
| Storage area for lunch box                                | ● |
| Large cup holder  | ● |
| Fire extinguisher   | ● |
| Tinted windows with safety glass                          | ● |
| Door window as sliding window                             | ● |
| Radio with USB and SD port, MP3 and Bluetooth             | ● |
| Removable floor mat                                       | ● |
| SenCon diagnostic system                                  | ● |
| Multicolor monitor  | ● |
| Tilt out front window                                     | ● |
| Halogen light package on cab roof                         | ● |
| Mechanical hour meter                                     | ● |
| Sliding door  | ● |
| Catwalk w / handrail                                      | ● |
| 12 V / 24 V power outlet                                  | ● |
| Windshield wiper and washers                              | ● |
| Emergency exit hammer                                     | ● |
| Safety lever  | ● |
| Sun shades  | ● |
| Interior lighting   | ● |
| Rain cover front window                                   | ● |
| Outside mirror  | ● |
| Optical and acoustic warning system                       | ● |
| Positive filtered ventilation (pressurized cab)           | ● |
| Safety check valves for elevating cab cylinder            | ● |
| Foot rest   | ● |
| Bulletproof windshield                                    | ● |
| Bulletproof skylight                                      | ● |
| Windshield protection guard                               | ○ |
| Skylight protection guard                                 | ○ |
| Skylight FOPS guard                                       | ○ |
| Polycarbonate side windows                                | ○ |
| Additional light package                                  | ○ |
| Fixed cab elevation                                       | ○ |
| Operator's cab with floor window                          | ○ |
| Additional cameras  | ○ |
| Spacious Mastercab  | ○ |
| Skylift cab elevation (elevation 7 m or 9 m)              | ○ |
| UNDERCARRIAGE   |   |
| Robust designed material handling undercarriage           | ● |
| Crawler undercarriage with mechanical fixed tracks        | ● |
| Heavy-duty crawler track frame                            | ● |
| 3'3" (1,000 mm) flat grouser shoes                        | ● |
| Maintenance-free crawler R147/580                         | ● |
| Hydraulic chain tension device                            | ● |
| Travel alarm  | ● |
| Centralized lubrication points                            | ● |
| Servo brake system  | ● |
| Towing hitch package                                      | ● |
| WORKING EQUIPMENT   |   |
| Purpose-built material handling boom                      | ● |
| Green Hybrid energy recovery system                       | ● |
| Purpose-built material handling stick                     | ● |
| Attachment hydraulic line connections with ball valves    | ● |
| Safety check valves for stick cylinders                   | ● |
| Safety check valves for boom cylinders                    | ● |
| Cylinder end position dumping                             | ● |
| Boom hoist limitation                                     | ● |
| Bronze bushings connected to automatic lubrication system | ● |
| Stick limitation  | ● |
| LED light package boom                                    | ○ |
| LED light package stick                                   | ○ |
| Purpose-built material handling boom for scrap shears     | ○ |
| MAGNET SYSTEM   |   |
| Hydraulic driven generator                                | ○ |
| Magnet controller   | ○ |
| Magnet suspension link                                    | ○ |
| ATTACHMENTS   |   |
| Orange peel grapple                                       | ○ |
| Mag grapple   | ○ |
| Clamshell   | ○ |
| Magnet  | ○ |
| Log grapple   | ○ |
| Scrap shear   | ○ |
| Power attachment  | ○ |
| Pipe handler  | ○ |
| SWING SYSTEM  |   |
| 360° protection cover, removable                          | ● |
| Electrical driven swing gear pinion lubrication pump      | ● |

Standard Equipment ● Optional Equipment ○

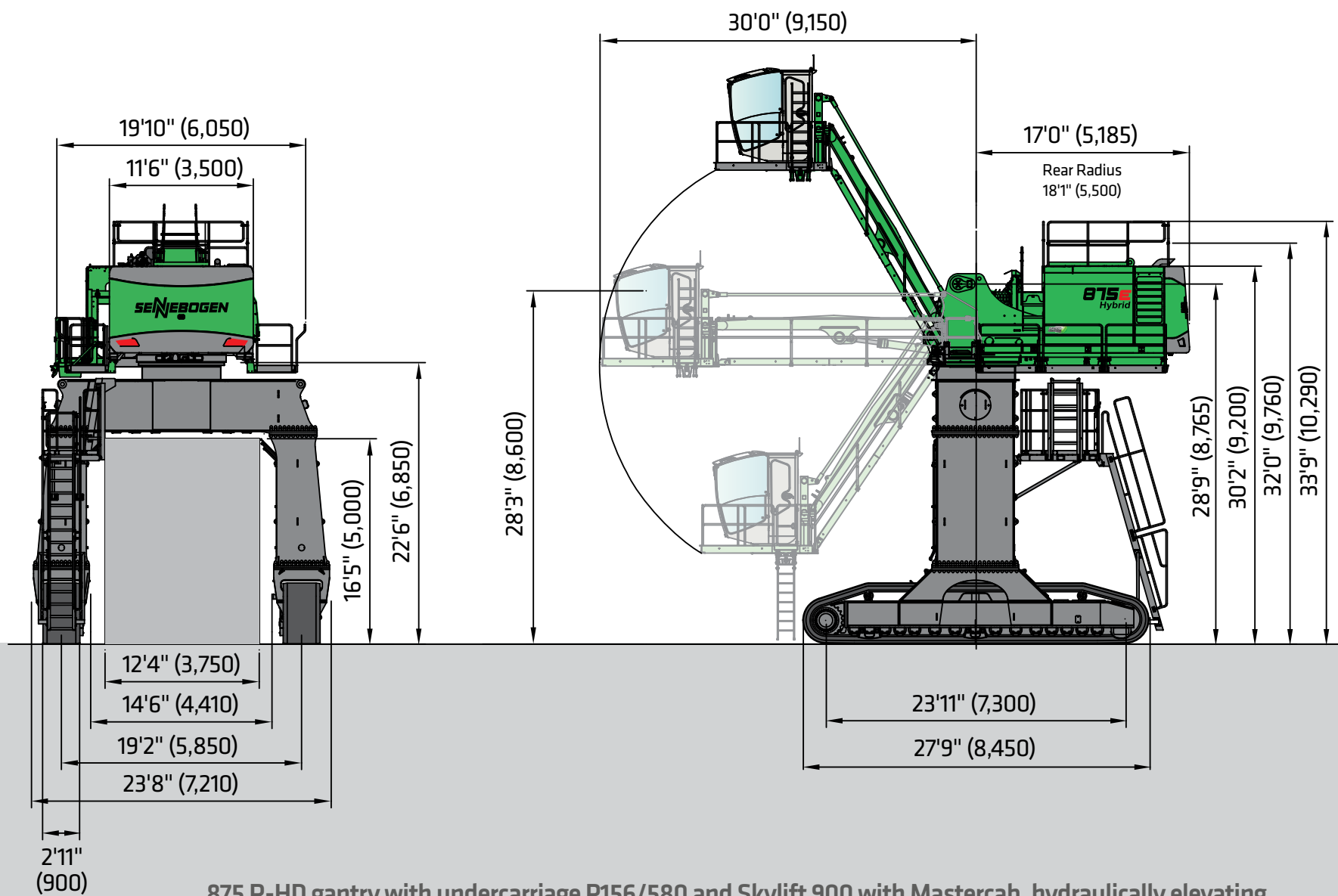
Subject to technical modification.

## Dimensions - 875 R-HD "E"



875 R-HD with R147/580 undercarriage and e300/260 Maxcab industry (series)  
which can be elevated and moved forward hydraulically





875 R-HD gantry with undercarriage P156/580 and Skylift 900 with Mastercab, hydraulically elevating

## Lift Capacities - 875 R-HD "E"

### Working Equipment K18

|       |                |
|-------|----------------|
| Reach | 59'1" (18.0 m) |
| Boom  | 35'5" (10.8 m) |
| Stick | 28'7" (7.8 m)  |

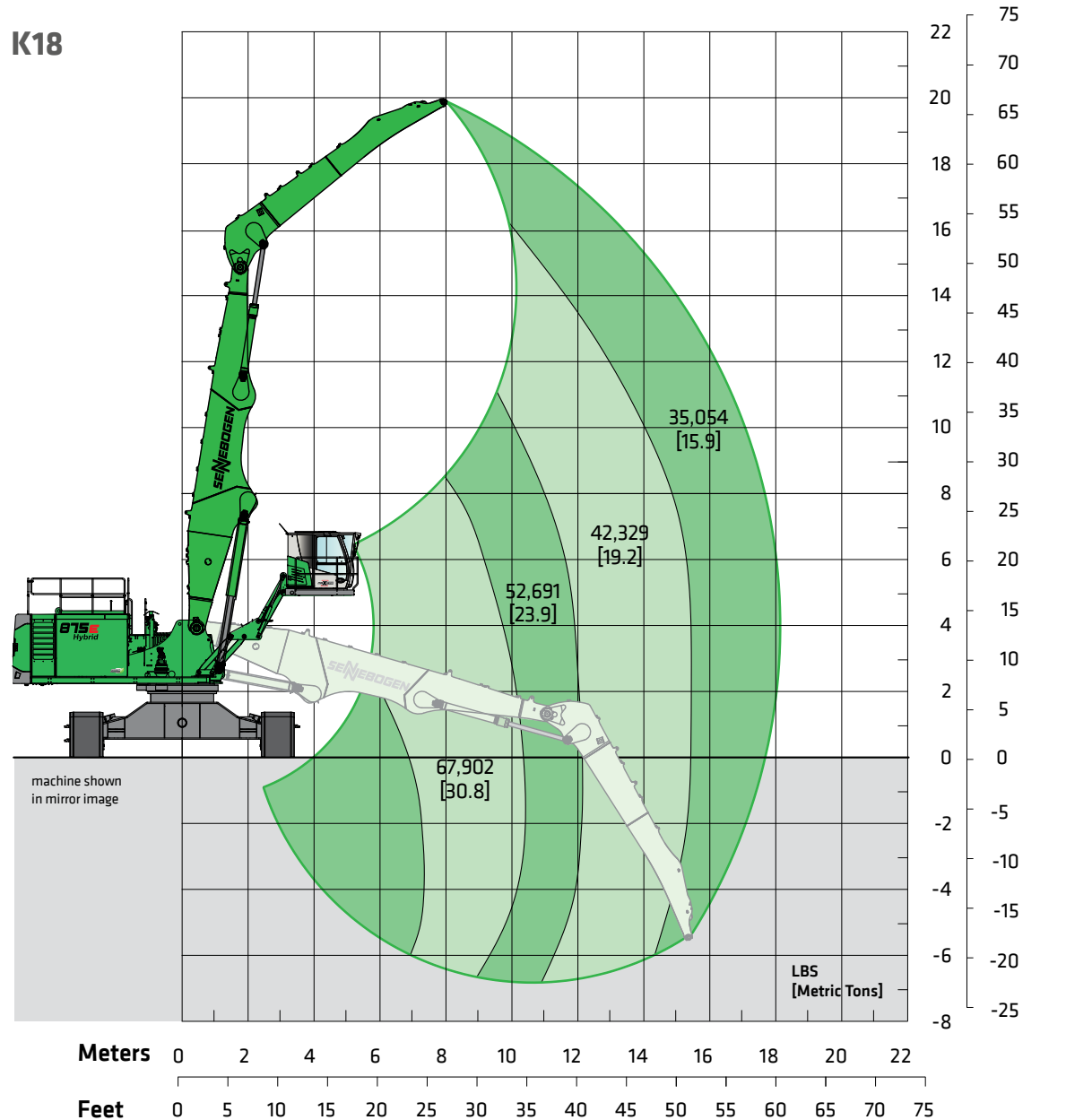
### Operator's Cab

|           |  |
|-----------|--|
| Model     | Maxcab Industry,<br>can be elevated by 9'10" (3 m)<br>and moved forward 8'6" (2.6 m) |
| Eye level | approx. 19'4" (6.5 m)  |

### Undercarriage

|        |                                       |
|--------|---------------------------------------|
| Model  | R147/580                              |
| Tracks | flat grouser shoes<br>3'3" (1,000 mm) |

K18



Lift capacities are stated in pounds. Values in [ ] are stated in metric tons. Indicated figures are based on ISO 10567 and do not exceed 75% of tipping and 87% of hydraulic capacity and machine standing on firm, level supporting surface. Loads are valid for 360° with machine support outriggers. Lifting capacities do not include working equipment such as orange peel grapples, magnets, clamshells, etc. The load point is the center line of the attachment pivot mounting pin on the stick. Their weights must be deducted from the numbers indicated in the lift charts. Please contact SENNEBOGEN or your local dealer for optimum attachment selection. The operator/user of the machine should be fully acquainted with the operator's & safety manuals provided by SENNEBOGEN. Capacities apply only to the machine as originally manufactured and equipped by SENNEBOGEN.



# Lift Capacities - 875 R-HD "E"

K21

## Working Equipment K21

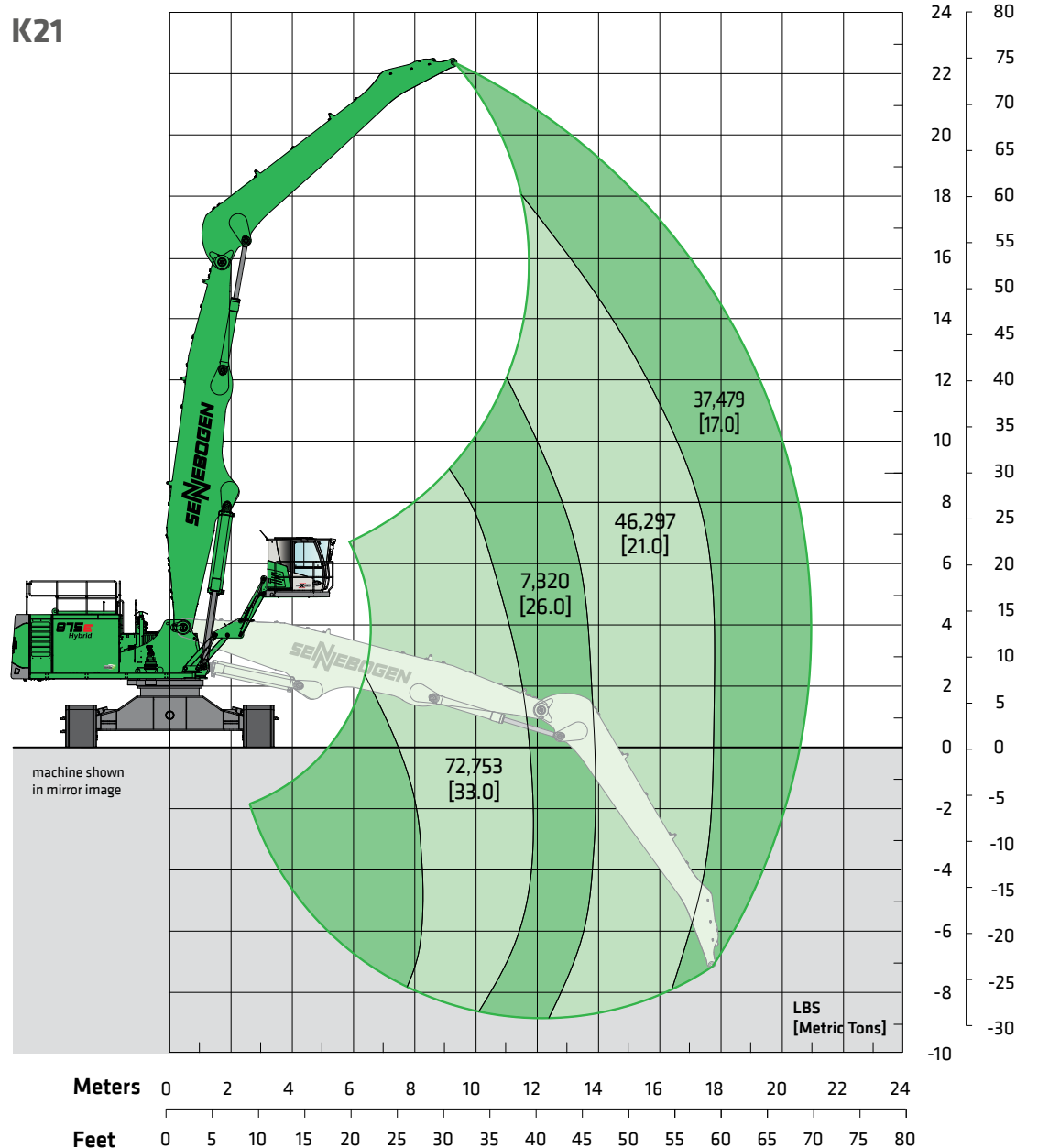
|       |               |
|-------|---------------|
| Reach | 68'11" (21 m) |
| Boom  | 39'4" (12 m)  |
| Stick | 32'10" (10 m) |

## Operator's Cab

|           |  |
|-----------|--|
| Model     | Maxcab Industry,<br>can be elevated by 9'10" (3 m)<br>and moved forward 8'6" (2.6 m) |
| Eye level | approx. 19'4" (6.5 m)  |

## Undercarriage

|        |                                       |
|--------|---------------------------------------|
| Model  | R147/580                              |
| Tracks | flat grouser shoes<br>3'3" (1,000 mm) |



Lift capacities are stated in pounds. Values in [ ] are stated in metric tons. Indicated figures are based on ISO 10567 and do not exceed 75% of tipping and 87% of hydraulic capacity and machine standing on firm, level supporting surface. Loads are valid for 360° with machine support outriggers. Lifting capacities do not include working equipment such as orange peel grapples, magnets, clamshells, etc. The load point is the center line of the attachment pivot mounting pin on the stick. Their weights must be deducted from the numbers indicated in the lift charts. Please contact SENNEBOGEN or your local dealer for optimum attachment selection. The operator/user of the machine should be fully acquainted with the operator's & safety manuals provided by SENNEBOGEN. Capacities apply only to the machine as originally manufactured and equipped by SENNEBOGEN.

# Lift Capacities - 875 R-HD "E"

## Working Equipment B24

Reach 78'9" (24.0 m)

Boom 44'3" (13.5 m)

Stick 40'4" (12.3 m)

## Operator's Cab

Model Maxcab Industry,  
can be elevated by 9'10" (3 m)  
and moved forward 8'6" (2.6 m)

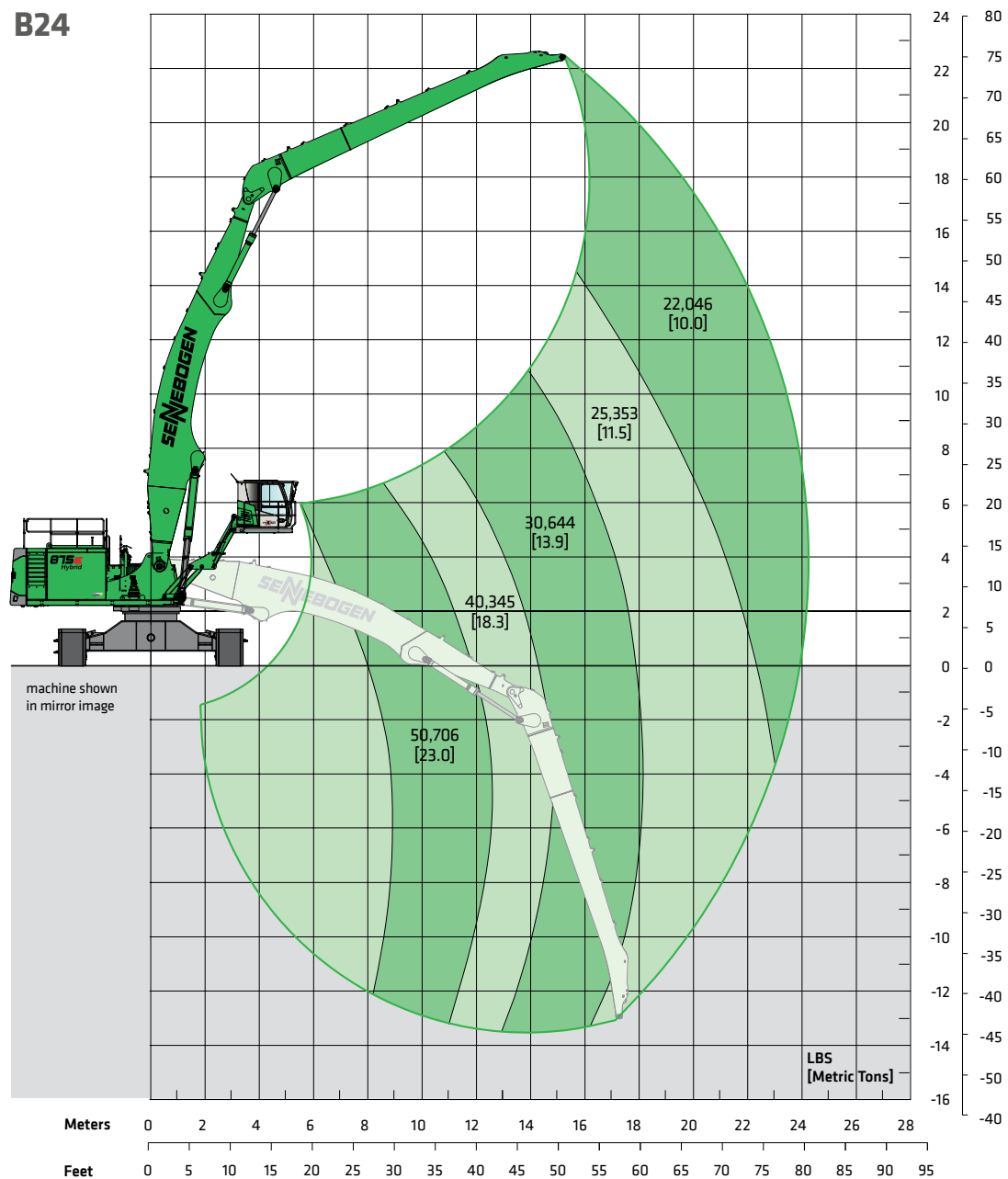
Eye level approx. 19'4" (6.5 m)

## Undercarriage

Model R147/580

Tracks flat grouser shoes  
3'3" (1,000 mm)

B24



Lift capacities are stated in pounds. Values in [ ] are stated in metric tons. Indicated figures are based on ISO 10567 and do not exceed 75% of tipping and 87% of hydraulic capacity and machine standing on firm, level supporting surface. Loads are valid for 360° with machine support outriggers. Lifting capacities do not include working equipment such as orange peel grapples, magnets, clamshells, etc. The load point is the center line of the attachment pivot mounting pin on the stick. Their weights must be deducted from the numbers indicated in the lift charts. Please contact SENNEBOGEN or your local dealer for optimum attachment selection. The operator/user of the machine should be fully acquainted with the operator's & safety manuals provided by SENNEBOGEN. Capacities apply only to the machine as originally manufactured and equipped by SENNEBOGEN.



# Lift Capacities - 875 R-HD "E"

K29

## Working Equipment K29

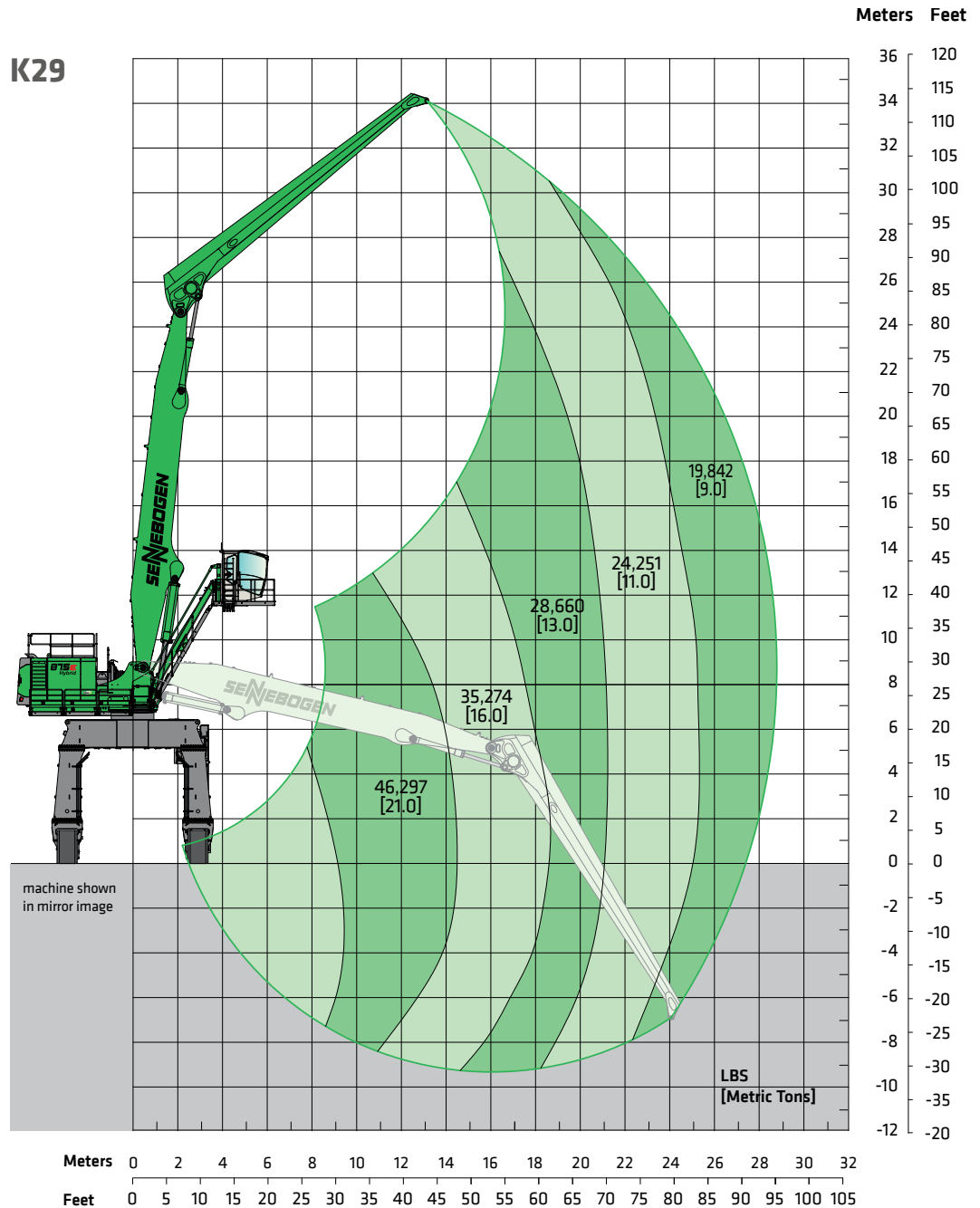
|       |                |
|-------|----------------|
| Reach | 95'2" (29 m)   |
| Boom  | 52'6" (16 m)   |
| Stick | 47'7" (14.5 m) |

## Operator's Cab

|           |  |
|-----------|--|
| Model     | Skylift 900 with Mastercab, hydraulically elevating (optional) |
| Eye level | approx. 45' (13.7 m)   |

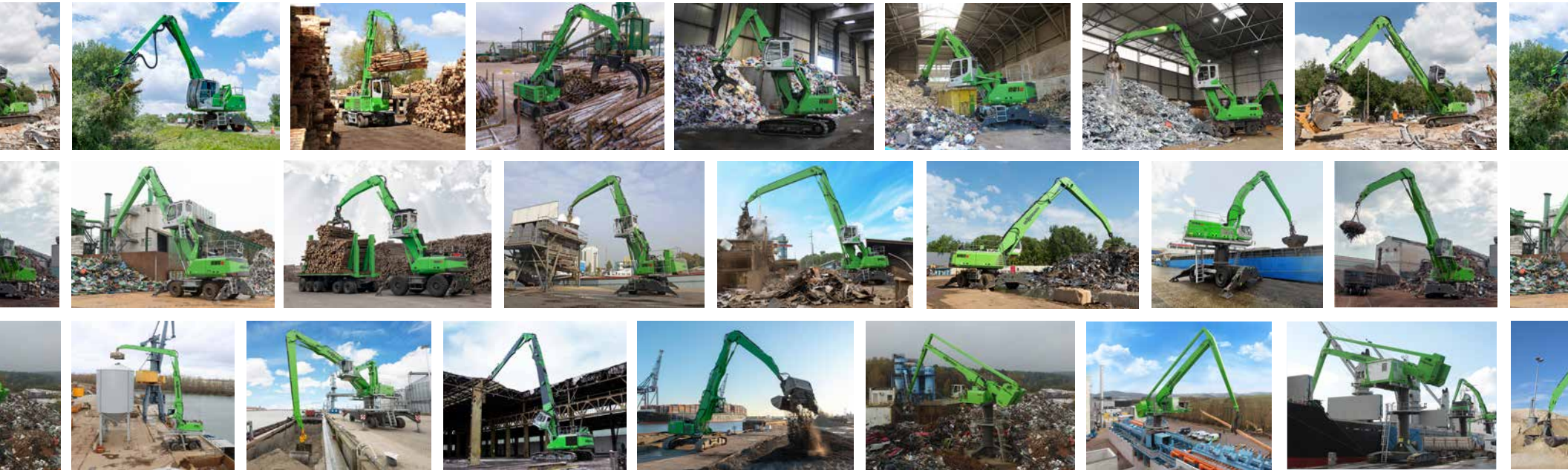
## Undercarriage

|        |                                      |
|--------|--------------------------------------|
| Model  | P156/580                             |
| Tracks | flat grouser shoes<br>2'11" (900 mm) |



Lift capacities are stated in pounds. Values in [ ] are stated in metric tons. Indicated figures are based on ISO 10567 and do not exceed 75% of tipping and 87% of hydraulic capacity and machine standing on firm, level supporting surface. Loads are valid for 360° with machine support outriggers. Lifting capacities do not include working equipment such as orange peel grapples, magnets, clamshells, etc. The load point is the center line of the attachment pivot mounting pin on the stick. Their weights must be deducted from the numbers indicated in the lift charts. Please contact SENNEBOGEN or your local dealer for optimum attachment selection. The operator/user of the machine should be fully acquainted with the operator's & safety manuals provided by SENNEBOGEN. Capacities apply only to the machine as originally manufactured and equipped by SENNEBOGEN.

# OUR LINEUP OF PURPOSE-BUILT MATERIAL HANDLERS



**SENNEBOGEN**®

**SENNEBOGEN LLC**  
1957 Sennebogen Trail  
Stanley, NC 28164 USA

Phone +1 (704) 347-4910  
Fax +1 (704) 347-8894  
Email [sales@sennebogenllc.com](mailto:sales@sennebogenllc.com)