

PURPOSE-BUILT FROM THE GROUND UP



728E M MATERIAL HANDLER



Cummins QSB 6.7, Tier 4F
129HP (173kW)



Rubber Tired (M)
74,957 lbs (34,000 kg)

SENNEBOGEN®

You told us that our new tree-care machines are a game-changer.

NOW, WE'RE UPPING OUR GAME!

SENNEBOGEN 728 M TREE-CARE HANDLER

The new 728 M purpose-built tree-care handler combines the best of the original 718 M and 738 M machines:



Extended reach

Reach up to 65 feet with the 728's telescoping boom to put its powerful grapple-saw right where you need it. That's 22 feet more than the 718 and just 10 feet short of the big 738.



Easy transportability

The 728 is as mobile as the 718, able to self-load onto most standard low-boy trailers and travel on public roadways without waivers. Street-legal, the 728 is able to move into position and between job locations at better than 12 mph.



Game-changing productivity

Comparable to the 718, the 728 M handles up to 3,700 lbs at its maximum horizontal reach – enough to move and stack large limbs or whole trees in a single, efficient step.



Smooth Power

Driven by the same 173 HP Cummins Tier 4F engine as the 738, the hydraulic system of the 728 has ample power to run heavy duty grapple-saws, mowers and other attachments, with all the agility you need for precise pruning, felling, trimming, and stacking.



Comfort and Safety

The elevating Maxcab allows operators a wide-angle view of the worksite and a direct look into the cutting zone, safely enclosed in a climate-controlled workstation.

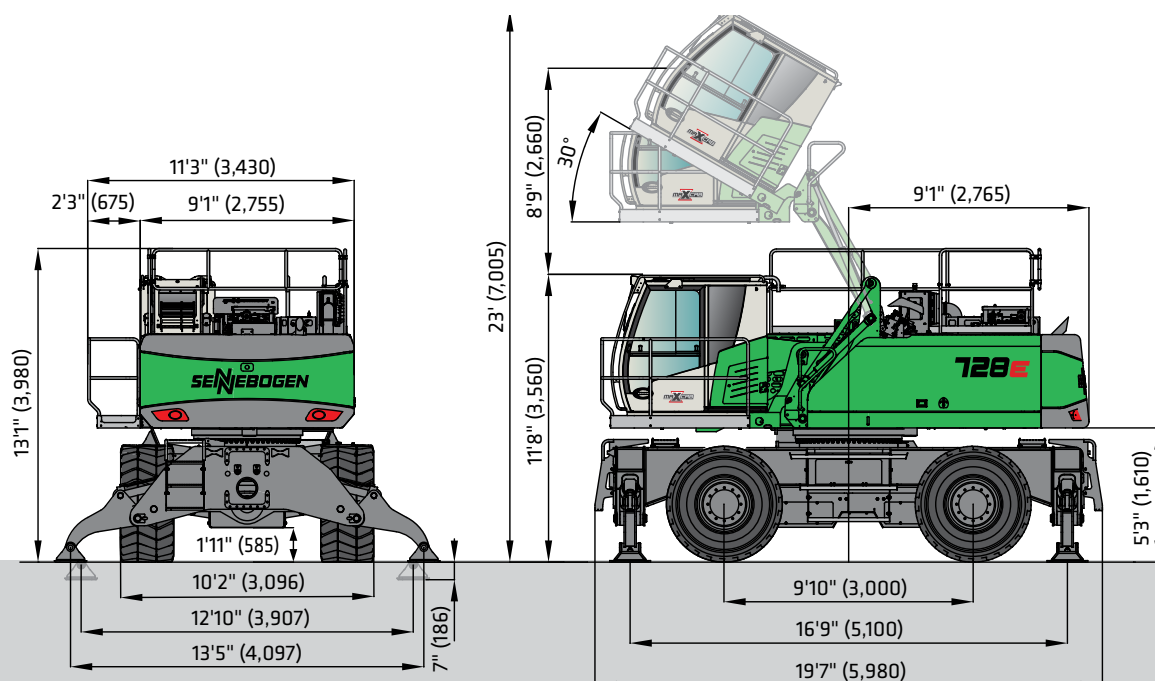
728 M “E” Technical Specifications

ENGINE	
model	Cummins QSB 6.7
type	inline 6 cylinder, direct injection
emission	EPA Tier 4 Final
net power	129 HP (173 kW) @ 2200 rpm
displacement	409 cu.in. (6.7 L)
bore	4.21 in (107 mm)
stroke	4.88 in (124 mm)
aspiration	turbo charged, charge air cooled
fuel tank	118 gal (450 L)
air filtration	2 stage air filtration system
control	integrated ECM automatic idle - stop eco mode
SWING SYSTEM	
swing speed	0 - 8 rpm
swing hydraulic	open loop
drive	1 x axial piston motor driving planetary gearbox, integrated brake vales
swing brake	multidisc brake, spring applied
swing bearing	internal teeth, sealed triple roller bearing

COOLING	
cooling type	thermostatically controlled
hydraulic / water after cooler	side by side
charge air	direct fan drive
UPPER CARRIAGE	
robust design	torsion-free upper frame with high strength one piece steel plates
TRAVEL / UNDERCARRIAGE	
type	rubber tired MP28E
drive system	all-wheel drive, variable displacement motor with dual stage power shift transmission
travel speed	1 st 0-4.35 mph (0-7 km/h) 2 nd 0-12.43 mph (0-20 km/h)
steering	joystick steering
design	robust undercarriage with 4-point outrigger or combination of stabilizer blade and outrigger, independent actuation
front axle	oscillating with hydraulic lock, integrated safety check valves
rear axle	fixed
tires	pneumatic tires 650/65R25

HYDRAULIC SYSTEM	
system type	load sensing hydraulic system with hydraulic pilot control
pump type	variable-displacement axial-piston pump
pump control	on demand load sensing control
operating pressure	5076 psi (350 bar)
filtration system	Return filtration system with an additional 3 micron (HydroClean)
hydraulic tank	82 gal (310 L)
control system	proportional, precision hydraulic actuation of work movements using 2 hydraulic servo joysticks. Additional function with switches and pedals
attachment pump	additional piston pump for attachment independent from the main pump allowing proper operation of attachments that require high oil flow like mulchers or mowers
WEIGHT	
operating weight	74,957 lbs (34,000 kg)
Subject to technical modification.	

728 M “E” Dimensions

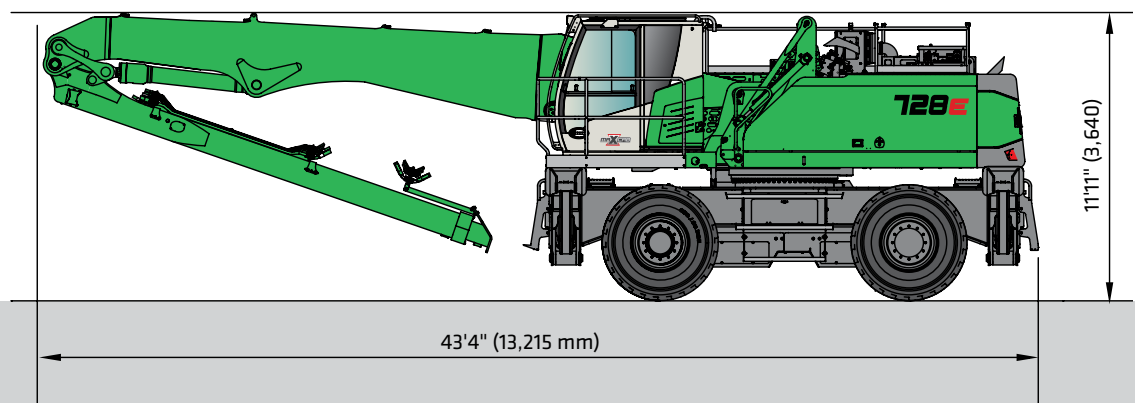


728 M “E” Standard / Optional Equipment

ENGINE		OPERATOR'S CAB (Maxcab)		SWING SYSTEM	
Water separator in fuel line	●	Hydraulic elevating cab system E270	●	Automatic lubrication system	●
Automatic idle / engine stop control	●	30° tilting cab system	●	UNDERCARRIAGE	
Eco mode	●	Multi-adjustable, air suspended operator's seat 3" (76 mm) seat belt	●	Robust designed material handling undercarriage	●
Air Filter Pre-cleaner	●	Seat heater	●	Heavy duty axles	●
Visual fuel tank check	●	Automatic climate control (heater / AC)	●	Front axle automatic oscillating axle unlock (travel position)	●
Heated water separator	●	Air outlets w / defroster	●	Dual stage power shift transmission	●
Engine block pre-heater	○	Storage area for lunch box	●	Drivetrain protection guards	●
ELECTRIC		Large cup holder	●	Travel alarm	●
Battery disconnect switch	●	Fire extinguisher	●	Centralized lubrication points	●
Centralized fuse box	●	Tinted windows with safety glass	●	Servo brake system	●
Battery jump start connection from ground level	●	Door window as sliding window	●	4-point outriggers	●
HYDRAULIC		Radio with USB and SD port, MP3 and Bluetooth	●	Integrated safety check valves in outrigger cylinders	●
Pilot pressure controlled variable displacement pump	●	Removable floor mat	●	Tool and storage compartments, lockable	●
Thermostatically controlled cooling system	●	SenCon diagnostic system	●	Individual outrigger control	●
Centralized hydraulic test ports	●	Multicolor Monitor	●	Increased size outrigger pads to decrease ground pressure	●
Protection covers for pilot pressure control valves	●	Halogen light package on cab roof	●	Below grade, bent outrigger legs	●
3 micron dual filtration system (HydroClean)	●	Sliding door	●	Pneumatic tires 650/65R25	●
Load sensing, flow on demand hydraulic system	●	Catwalk w / handrail	●	Supporting blade and 2 point outriggers	○
Optimized hydraulic pump regulation (GLR)	●	12 V / 24 V power outlet	●	Towing hitch package	○
Visual hydraulic tank check from ground level	●	Windshield wiper and washers	●	Winch system	○
Attachments open, close & rotation hydraulics	●	Emergency exit hammer	●	ATTACHMENTS	
Hydraulic tank shut off valve	●	Safety lever	●	Tilt Rotator (Tilting +/- 90° Rotating +/- 140°)	●
Dedicated hydraulic pump for high flow attachments	●	Sun shades	●	Heavy duty grapple-saw .47 yd³ (.36 m²)	●
Biodegradable hydraulic oil	●	Interior lighting	●	Mulcher	○
Electrical hydraulic tank pre-heater	○	Rain cover front window	●	Mower	○
Additional hydraulic circuits	○	Outside mirror	●	WORKING EQUIPMENT	
UPPER CARRIAGE		Optical and acoustic warning system	●	Attachment hydraulic line connections	●
Rearview & right side view camera system	●	Positive filtered ventilation (pressurized cab)	●	Safety check valves for boom cylinders	●
Automatic lubrication system	●	Safety check valves for elevating cab cylinder	●	Cylinder end position dumping	●
Anti-slip mats on walking area	●	Foot rest	●	Bronze bushings connected to automatic lubrication system	●
Lockable side doors	●	Windshield protection guard	●	Stick limiters	●
Handrails on top of upper carriage	●	Bulletproof windshield	●	Boom limiters	○
Mirror left side	●	Bulletproof skylight	●	LED light package boom	○
Turning signal lights in upper carriage frame	●	Skylight protection guard	●	LED light package stick	○
Removable panels	●	Skylight FOPS guard	○		
Additional light package	○	Polycarbonate side windows	○		
		Additional light package	○		
		Additional cameras	○		

Standard Equipment ● Optional Equipment ○

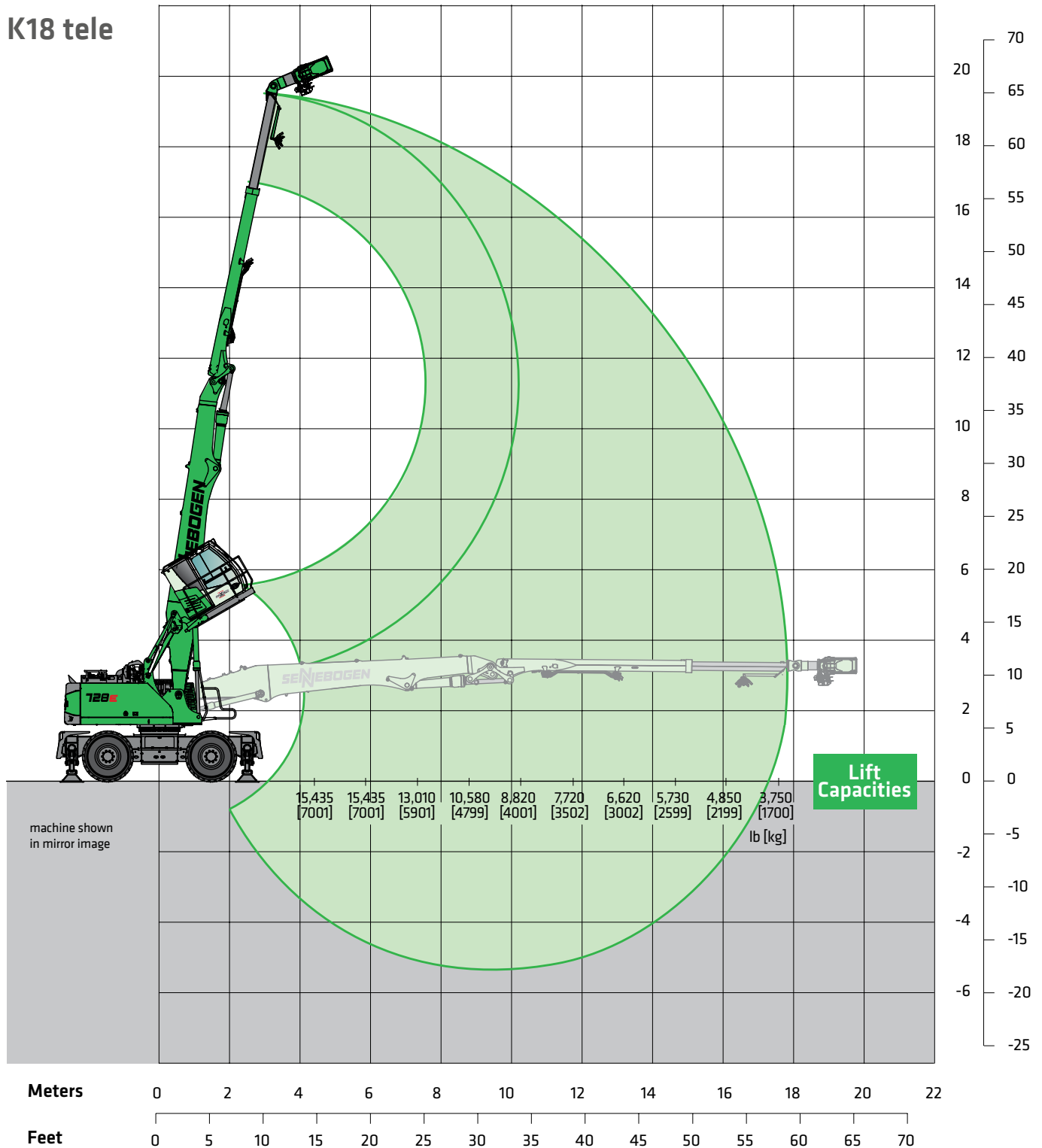
728 M “E” Transport Dimensions



728 M “E” Lift Capacity & Reach

Meters Feet

K18 tele



Lift capacities are in lb and [kg] and are 75% of the static tipping load or 87% of the hydraulic lifting force in accordance with ISO 10567, and apply at the required operating temperature in the Green Hybrid system. They apply on firm and level ground and 360° slewing. Attachments such as orange-peel grabs, magnets, etc. are included in the load capacity. In accordance with harmonized EU standard EN 474-5, hydraulic excavators used for hoisting must be equipped with pipe fracture safety devices on the hoist cylinders and an overload warning device.

OUR COMPLETE LINE OF **PURPOSE-BUILT MATERIAL HANDLERS**

