

# SENNEBOGEN®



## GRAPPLES

### **CUSTOM-ENGINEERED TO GET THE BEST FROM YOUR MACHINE**

SENNEBOGEN, long acknowledged as leaders in innovation, are now offering their latest product line matched to maximize the performance for their material handlers.

Introducing the SENNEBOGEN 4-tine and 5-tine Grapples and Mag Grabs... Purpose-built to meet the demanding requirements of the scrap industry.



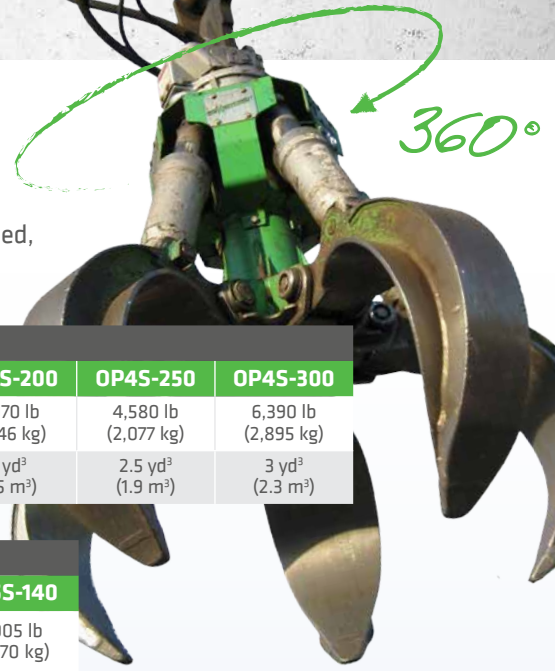
# FULLY PROTECTED

Designed with high pressure cylinders, SENNEBOGEN provides their hydraulic grapples with an unequalled level of hose protection and a unique self-contained hydraulic fluid channeling system. This means that the hoses are routed in a way that prevents them from being damaged and are protected with guarding preventing any unscheduled downtime due to hose damage.

They are quickly becoming recognized as robust, production-rated orange peel grabs that will outlift comparable units. Built to outlast the competition, SENNEBOGEN Grapples and Mag Grabs feature adjustable mechanical stops and the jaw tips are configured with wear-resistant metal.

# GOOD FROM ANY ANGLE

Being able to rotate the grapple into the best position for maximum productivity is key. With SENNEBOGEN grapples, in addition to 360° of rotation, all the rotators are fully sealed, allowing them to be submersed in up to 15 ft (4.6 m) of water.



SPECS	4-TINE GRAPPLES							
MODEL	OP4S-050	OP4S-075	OP4S-100	OP4S-125	OP4S-150	OP4S-200	OP4S-250	OP4S-300
<b>Weight</b> (excluding rotation)	2,295 lb (1,041 kg)	2,385 lb (1,082 kg)	2,660 lb (1,207 kg)	3,520 lb (1,597 kg)	3,790 lb (1,719 kg)	4,070 lb (1,846 kg)	4,580 lb (2,077 kg)	6,390 lb (2,895 kg)
<b>Capacity</b>	0.5 yd <sup>3</sup> (0.4 m <sup>3</sup> )	0.8 yd <sup>3</sup> (0.6 m <sup>3</sup> )	1 yd <sup>3</sup> (0.8 m <sup>3</sup> )	1.3 yd <sup>3</sup> (1 m <sup>3</sup> )	1.5 yd <sup>3</sup> (1.2 m <sup>3</sup> )	2 yd <sup>3</sup> (1.5 m <sup>3</sup> )	2.5 yd <sup>3</sup> (1.9 m <sup>3</sup> )	3 yd <sup>3</sup> (2.3 m <sup>3</sup> )

SPECS	5-TINE GRAPPLES					
MODEL	OP5S-040	OP5S-060	OP5S-080	OP5S-090	OP5S-110	OP5S-140
<b>Weight</b> (excluding rotation)	2,695 lb (1,222 kg)	2,805 lb (1,272 kg)	3,250 lb (1,474 kg)	4,320 lb (1,960 kg)	4,655 lb (2,111 kg)	5,005 lb (2,270 kg)
<b>Capacity</b>	0.5 yd <sup>3</sup> (0.4 m <sup>3</sup> )	0.8 yd <sup>3</sup> (0.6 m <sup>3</sup> )	1 yd <sup>3</sup> (0.8 m <sup>3</sup> )	1.2 yd <sup>3</sup> (0.9 m <sup>3</sup> )	1.4 yd <sup>3</sup> (1.1 m <sup>3</sup> )	1.8 yd <sup>3</sup> (1.4 m <sup>3</sup> )

SPECS	MAG GRABS											
MODEL	OPM4S-075	OPM4S-100	OPM4S-100HD	OPM4S-125	OPM4S-150	OPM4S-150HD	OPM4S-200HD					
<b>Magnet size</b>	30" (762 mm)	36" (914 mm)	36" (914 mm)	40" (1,016 mm)	40" (1,016 mm)	40" (1,016 mm)	44" (1,118 mm)	44" (1,118 mm)	50" (1,270 mm)	44" (1,118 mm)	50" (1,270 mm)	
<b>Weight</b>	950 lb (431 kg)	1,570 lb (712 kg)	1,570 lb (712 kg)	1,840 lb (835 kg)	1,840 lb (835 kg)	1,840 lb (835 kg)	2,500 lb (1,134 kg)	2,500 lb (1,134 kg)	3,500 lb (1,587 kg)	2,500 lb (1,134 kg)	3,500 lb (1,587 kg)	
<b>Capacity</b>	0.75 yd <sup>3</sup> (0.57 m <sup>3</sup> )	0.75 yd <sup>3</sup> (0.57 m <sup>3</sup> )	1.0 yd <sup>3</sup> (0.8 m <sup>3</sup> )	1.0 yd <sup>3</sup> (0.8 m <sup>3</sup> )	1.25 yd <sup>3</sup> (1 m <sup>3</sup> )	1.5 yd <sup>3</sup> (1.2 m <sup>3</sup> )	1.5 yd <sup>3</sup> (1.2 m <sup>3</sup> )	1.5 yd <sup>3</sup> (1.2 m <sup>3</sup> )	1.5 yd <sup>3</sup> (1.2 m <sup>3</sup> )	2 yd <sup>3</sup> (1.5 m <sup>3</sup> )	2 yd <sup>3</sup> (1.5 m <sup>3</sup> )	

SPECS	ROTATORS		
MODEL	RT-3220R	RT-5020R	RT-10020R
<b>Swing torque</b>	16,150 in-lb	18,630 in-lb	22,360 in-lb
<b>Axial lift capacity</b>	32,000 lb (14,515 kg)	50,000 lb (22,680 kg)	100,000 lb (45,359 kg)
<b>Weight</b>	310 lb (141 kg)	450 lb (204 kg)	655 lb (297 kg)
<b>Height</b>	16" (406 mm)	17" (432 mm)	20" (508 mm)



## PURPOSE-BUILT FROM THE GROUND UP

1957 Sennebogen Trail • Stanley, NC 28164 USA • Tel: +1 704-347-4910  
[www.sennebogen-na.com](http://www.sennebogen-na.com)

