



SENNEBOGEN CAPITAL Finance rates for the month of March 2025

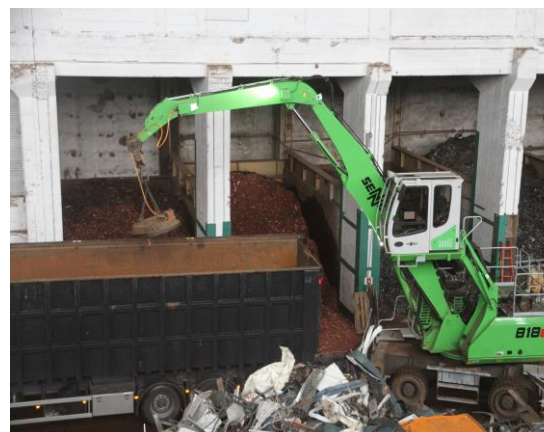
Retail Rates – Full Payout (U.S. Only)

Rates good through March 31, 2025

NEW RATES

Term	factor	rate
24 months	0.04412	5.56%
36 months	0.03050	6.18%
48 months	0.02373	6.53%
60 months	0.01969	6.77%
72 months	0.01702	6.94%

- Please contact your Sennebogen Capital representative for quotations on True Lease transactions.
- Payments are calculated in arrears
- All new Sennebogen equipment is eligible with the exception of models 875 and above, 880, EQ, non-standard machines and Tree Care models.
- Rates good through March 31, 2025
- Payment factors are approximate
- Updated rates will be published at the beginning of each month
- Transactions may require financial information to determine a final credit decision.
- Rates good for transactions approved by March 31, 2025. If the transaction is not funded by April 30, 2025, the rates will be indexed at time of funding
- This rate sheet is intended for the use of the dealer only. This rate sheet is valid for period hereof and shall automatically be deemed null and void after that period
- Rates applicable for qualified buyers only
- Subject to credit review and approval and other terms and conditions
- All financing is in De Lage Landen Financial Services, Inc.'s sole discretion



Example 60 month Loan & Security Agreement

Amount financed	= \$600,000
Rate multiplier	= 0.01969
Monthly payment	= \$11,814.00

"Note: Applicable taxes and fees are additional"

"Pending the lease or product selected, an advance payment may be required and will vary based on the payment terms selected. These materials are for informational purposes only. The table represents a summary. Contact your DLL representative for details."

Patrick Burke
Northeast/Northwest Sales Director
Cell: 610.316.5982
Fax: 866.287.1176
email: pburke@leasedirect.com

Alex McAllister
Country Manager
Cell: 484.366.7438
Fax: 866.287.1176
email: amcallister@leasedirect.com

Molt Massey
Southeast Sales Director
Cell: 484.868.1167
Fax: 866.287.1176
email: mmassey@leasedirect.com

Patrick Gray
Central- Midwest Sales Director
Ph: 773.342.6834
Cell: 312.282.9967
Fax: 866.287.1176
email: pgray@leasedirect.com

Jerry Sokolowski
Program Manager
Ph: 610.386.3703
Cell: 215.870.6798
Fax: 866.287.1176
email: jsokolowski@leasedirect.com